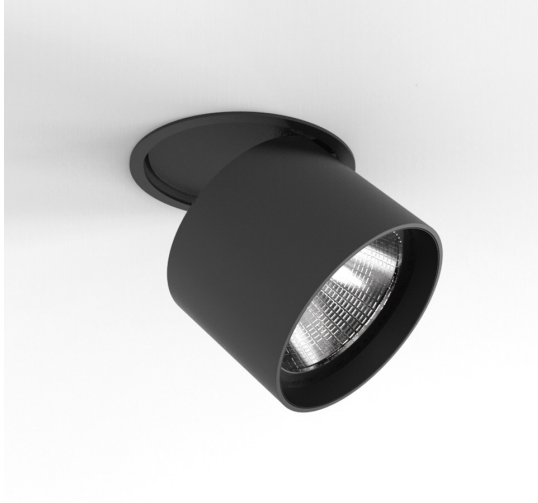
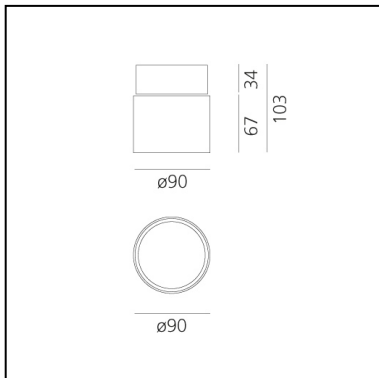


Hoy Spot - Semi-recessed - 13° - 2700K - Black

Foster + Partners Industrial Design



IP20   



LUMINAIRE

- Watt: **19W**
- Voltage: **220-240V**
- Delivered lumen output: **2053lm**
- CCT: **2700K**
- Efficiency: **91%**
- Efficacy: **108.05lm/W**
- CRI: **90**

Notes

Driver supplied separately.
Fitting to be completed with installation frame.

FEATURES

- Product Code: **BM00004**
- Colour: **Black**
- Installation: **RecessedProjector**
- Series: **Architectural Indoor**
- Environment: **Indoor**
- design by: **Foster + Partners Industrial Design**

DIMENSIONS

- Height: **103 mm**
- Diameter: **90 mm**
- Cutout diameter: **95 mm**
- Recessed depth: **34 mm**
- Inclination: **90°**
- Rotation: **360°**
- Cutout shape: **Rounded**

SOURCES INCLUDED

- Category: **Led**
- Number: **1**
- Watt: **19W**
- Color Tolerance: **MacAdam 3SDCM**
- Service Life: **L70 (6K) 50000h**

Accessories

NO
IMAGE
AVAILABLE

Driver cc 32-36W - 700mA - 220-240 Vac -
103x67x21 (LxWxH) - Dimmable DALI M079200

NO
IMAGE
AVAILABLE

DRIVER cc 32-36W - 700mA - 220-240 - 103x67x21
(LxWxH) - Dimmable PUSH/1-10V M079300



Driver 15-32W 350-725mA - 220-24Vac -
146,5x43,5x22 mm (LxWxH) - Undimmable
dv1030

NO
IMAGE
AVAILABLE

Driver 23W 550mA - 220-24Vac - 146,5x43,5x22
mm (LxWxH) - APP Dimmable DV1062APP



Trimless Frame BM05000



Trim Frame - 105mm - White BM05101



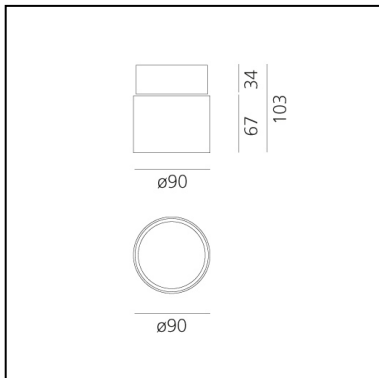
Trim Frame - 105mm - Black BM05104

Hoy Spot - Semi-recessed - 13° - 2700K - White

Foster + Partners Industrial Design



IP20   CE



LUMINAIRE

- Watt: **19W**
- Voltage: **220-240V**
- Delivered lumen output: **2053lm**
- CCT: **2700K**
- Efficiency: **91%**
- Efficacy: **108.05lm/W**
- CRI: **90**

Notes

Driver supplied separately.
Fitting to be completed with installation frame.

FEATURES

- Product Code: **BM00001**
- Colour: **White**
- Installation: **RecessedProjector**
- Series: **Architectural Indoor**
- Environment: **Indoor**
- design by: **Foster + Partners Industrial Design**

DIMENSIONS

- Height: **103 mm**
- Diameter: **90 mm**
- Cutout diameter: **95 mm**
- Recessed depth: **34 mm**
- Inclination: **90°**
- Rotation: **360°**
- Cutout shape: **Rounded**

SOURCES INCLUDED

- Category: **Led**
- Number: **1**
- Watt: **19W**
- Color Tolerance: **MacAdam 3SDCM**
- Service Life: **L70 (6K) 50000h**

Accessories

NO
IMAGE
AVAILABLE

Driver cc 32-36W - 700mA - 220-240 Vac -
103x67x21 (LxWxH) - Dimmable DALI M079200

NO
IMAGE
AVAILABLE

DRIVER cc 32-36W - 700mA - 220-240 - 103x67x21
(LxWxH) - Dimmable PUSH/1-10V M079300



Driver 15-32W 350-725mA - 220-24Vac -
146,5x43,5x22 mm (LxWxH) - Undimmable
dv1030

NO
IMAGE
AVAILABLE

Driver 23W 550mA - 220-24Vac - 146,5x43,5x22
mm (LxWxH) - APP Dimmable DV1062APP



Trimless Frame BM05000



Trim Frame - 105mm - White BM05101



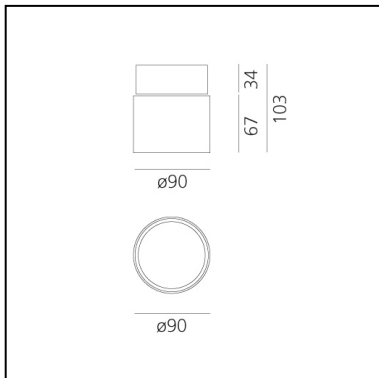
Trim Frame - 105mm - Black BM05104

Hoy Spot - Semi-recessed - 13° - 3000K - Black

Foster + Partners Industrial Design



IP20   



FEATURES

- Product Code: **BM00104**
- Colour: **Black**
- Installation: **Recessed Projector**
- Series: **Architectural Indoor**
- Environment: **Indoor**
- design by: **Foster + Partners Industrial Design**

DIMENSIONS

- Height: **103 mm**
- Diameter: **90 mm**
- Cutout diameter: **95 mm**
- Recessed depth: **34 mm**
- Inclination: **90°**
- Rotation: **360°**
- Cutout shape: **Rounded**

SOURCES INCLUDED

- Category: **Led**
- Number: **1**
- Watt: **19W**
- Color Tolerance: **MacAdam 3SDCM**
- Service Life: **L70 (6K) 50000h**

LUMINAIRE

- Watt: **19W**
- Voltage: **220-240V**
- Delivered lumen output: **2053lm**
- CCT: **3000K**
- Efficiency: **91%**
- Efficacy: **108.05lm/W**
- CRI: **90**

Notes

Driver supplied separately.
Fitting to be completed with installation frame.

Accessories

NO
IMAGE
AVAILABLE

Driver cc 32-36W - 700mA - 220-240 Vac -
103x67x21 (LxWxH) - Dimmable DALI M079200

NO
IMAGE
AVAILABLE

DRIVER cc 32-36W - 700mA - 220-240 - 103x67x21
(LxWxH) - Dimmable PUSH/1-10V M079300



Driver 15-32W 350-725mA - 220-24Vac -
146,5x43,5x22 mm (LxWxH) - Undimmable
dv1030

NO
IMAGE
AVAILABLE

Driver 23W 550mA - 220-24Vac - 146,5x43,5x22
mm (LxWxH) - APP Dimmable DV1062APP



Trimless Frame BM05000



Trim Frame - 105mm - White BM05101



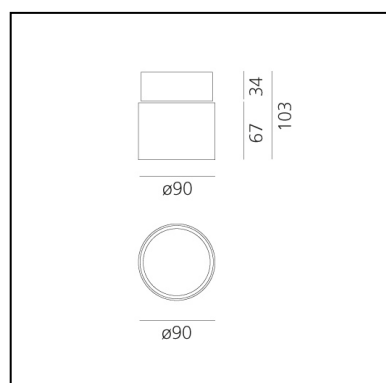
Trim Frame - 105mm - Black BM05104

Hoy Spot - Semi-recessed - 13° - 3000K - White

Foster + Partners Industrial Design



IP20   



LUMINAIRE

- Watt: **19W**
- Voltage: **220-240V**
- Delivered lumen output: **2053lm**
- CCT: **3000K**
- Efficiency: **91%**
- Efficacy: **108.05lm/W**
- CRI: **90**

Notes

Driver supplied separately.
Fitting to be completed with installation frame.

FEATURES

- Product Code: **BM00101**
- Colour: **White**
- Installation: **RecessedProjector**
- Series: **Architectural Indoor**
- Environment: **Indoor**
- design by: **Foster + Partners Industrial Design**

DIMENSIONS

- Height: **103 mm**
- Diameter: **90 mm**
- Cutout diameter: **95 mm**
- Recessed depth: **34 mm**
- Inclination: **90°**
- Rotation: **360°**
- Cutout shape: **Rounded**

SOURCES INCLUDED

- Category: **Led**
- Number: **1**
- Watt: **19W**
- Color Tolerance: **MacAdam 3SDCM**
- Service Life: **L70 (6K) 50000h**

Accessories

NO
IMAGE
AVAILABLE

Driver cc 32-36W - 700mA - 220-240 Vac -
103x67x21 (LxWxH) - Dimmable DALI M079200

NO
IMAGE
AVAILABLE

DRIVER cc 32-36W - 700mA - 220-240 - 103x67x21
(LxWxH) - Dimmable PUSH/1-10V M079300



Driver 15-32W 350-725mA - 220-24Vac -
146,5x43,5x22 mm (LxWxH) - Undimmable
dv1030

NO
IMAGE
AVAILABLE

Driver 23W 550mA - 220-24Vac - 146,5x43,5x22
mm (LxWxH) - APP Dimmable DV1062APP



Trimless Frame BM05000



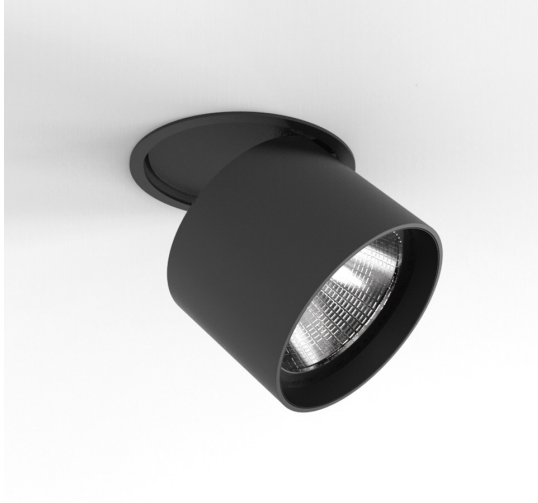
Trim Frame - 105mm - White BM05101



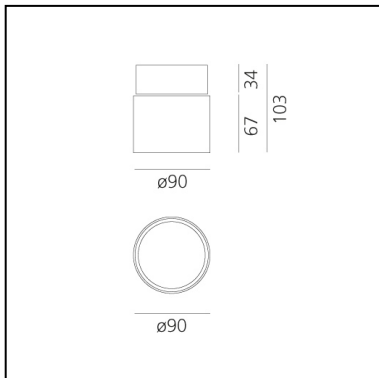
Trim Frame - 105mm - Black BM05104

Hoy Spot - Semi-recessed - 13° - 4000K - Black

Foster + Partners Industrial Design



IP20   



LUMINAIRE

- Watt: **19W**
- Voltage: **220-240V**
- Delivered lumen output: **2362lm**
- CCT: **4000K**
- Efficiency: **91%**
- Efficacy: **124.30lm/W**
- CRI: **90**

Notes

Driver supplied separately.
Fitting to be completed with installation frame.

FEATURES

- Product Code: **BM00204**
- Colour: **Black**
- Installation: **RecessedProjector**
- Series: **Architectural Indoor**
- Environment: **Indoor**
- design by: **Foster + Partners Industrial Design**

DIMENSIONS

- Height: **103 mm**
- Diameter: **90 mm**
- Cutout diameter: **95 mm**
- Recessed depth: **34 mm**
- Inclination: **90°**
- Rotation: **360°**
- Cutout shape: **Rounded**

SOURCES INCLUDED

- Category: **Led**
- Number: **1**
- Watt: **19W**
- Color Tolerance: **MacAdam 3SDCM**
- Service Life: **L70 (6K) 50000h**

Accessories

NO
IMAGE
AVAILABLE

Driver cc 32-36W - 700mA - 220-240 Vac -
103x67x21 (LxWxH) - Dimmable DALI M079200

NO
IMAGE
AVAILABLE

DRIVER cc 32-36W - 700mA - 220-240 - 103x67x21
(LxWxH) - Dimmable PUSH/1-10V M079300



Driver 15-32W 350-725mA - 220-24Vac -
146,5x43,5x22 mm (LxWxH) - Undimmable
dv1030

NO
IMAGE
AVAILABLE

Driver 23W 550mA - 220-24Vac - 146,5x43,5x22
mm (LxWxH) - APP Dimmable DV1062APP



Trimless Frame BM05000



Trim Frame - 105mm - White BM05101



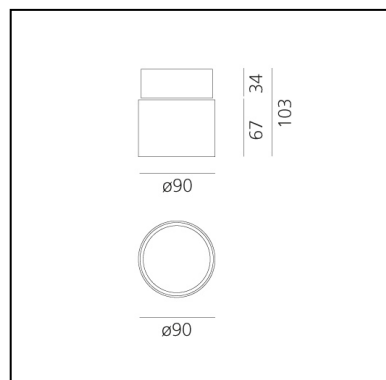
Trim Frame - 105mm - Black BM05104

Hoy Spot - Semi-recessed - 13° - 4000K - White

Foster + Partners Industrial Design



IP20   



LUMINAIRE

- Watt: **19W**
- Voltage: **220-240V**
- Delivered lumen output: **2362lm**
- CCT: **4000K**
- Efficiency: **91%**
- Efficacy: **124.30lm/W**
- CRI: **90**

Notes

Driver supplied separately.
Fitting to be completed with installation frame.

FEATURES

- Product Code: **BM00201**
- Colour: **White**
- Installation: **RecessedProjector**
- Series: **Architectural Indoor**
- Environment: **Indoor**
- design by: **Foster + Partners Industrial Design**

DIMENSIONS

- Height: **103 mm**
- Diameter: **90 mm**
- Cutout diameter: **95 mm**
- Recessed depth: **34 mm**
- Inclination: **90°**
- Rotation: **360°**
- Cutout shape: **Rounded**

SOURCES INCLUDED

- Category: **Led**
- Number: **1**
- Watt: **19W**
- Color Tolerance: **MacAdam 3SDCM**
- Service Life: **L70 (6K) 50000h**

Accessories

NO
IMAGE
AVAILABLE

Driver cc 32-36W - 700mA - 220-240 Vac -
103x67x21 (LxWxH) - Dimmable DALI M079200

NO
IMAGE
AVAILABLE

DRIVER cc 32-36W - 700mA - 220-240 - 103x67x21
(LxWxH) - Dimmable PUSH/1-10V M079300



Driver 15-32W 350-725mA - 220-24Vac -
146,5x43,5x22 mm (LxWxH) - Undimmable
dv1030

NO
IMAGE
AVAILABLE

Driver 23W 550mA - 220-24Vac - 146,5x43,5x22
mm (LxWxH) - APP Dimmable DV1062APP



Trimless Frame BM05000



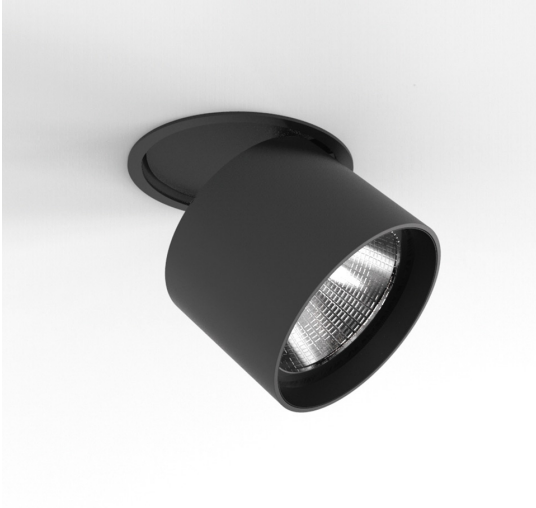
Trim Frame - 105mm - White BM05101



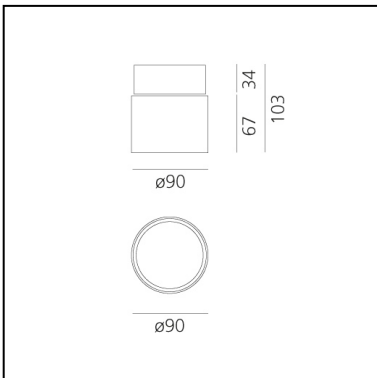
Trim Frame - 105mm - Black BM05104

Hoy Spot - Semi-recessed - 24° - 2700K - Black

Foster + Partners Industrial Design



IP20   



LUMINAIRE

- Watt: **19W**
- Voltage: **220-240V**
- Delivered lumen output: **1771lm**
- CCT: **2700K**
- Efficiency: **78%**
- Efficacy: **93.19lm/W**
- CRI: **90**

Notes

Driver supplied separately.
Fitting to be completed with installation frame.

FEATURES

- Product Code: **BM00304**
- Colour: **Black**
- Installation: **RecessedProjector**
- Series: **Architectural Indoor**
- Environment: **Indoor**
- design by: **Foster + Partners Industrial Design**

DIMENSIONS

- Height: **103 mm**
- Diameter: **90 mm**
- Cutout diameter: **95 mm**
- Recessed depth: **34 mm**
- Inclination: **90°**
- Rotation: **360°**
- Cutout shape: **Rounded**

SOURCES INCLUDED

- Category: **Led**
- Number: **1**
- Watt: **19W**
- Color Tolerance: **MacAdam 3SDCM**
- Service Life: **L70 (6K) 50000h**

Accessories

NO
IMAGE
AVAILABLE

Driver cc 32-36W - 700mA - 220-240 Vac -
103x67x21 (LxWxH) - Dimmable DALI M079200

NO
IMAGE
AVAILABLE

DRIVER cc 32-36W - 700mA - 220-240 - 103x67x21
(LxWxH) - Dimmable PUSH/1-10V M079300



Driver 15-32W 350-725mA - 220-24Vac -
146,5x43,5x22 mm (LxWxH) - Undimmable
dv1030

NO
IMAGE
AVAILABLE

Driver 23W 550mA - 220-24Vac - 146,5x43,5x22
mm (LxWxH) - APP Dimmable DV1062APP



Trimless Frame BM05000



Trim Frame - 105mm - White BM05101



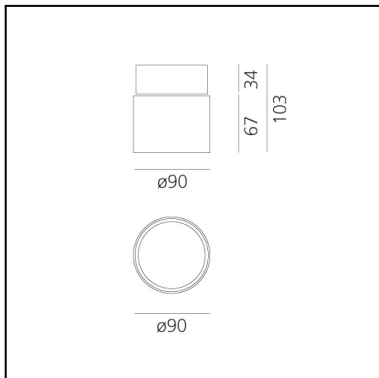
Trim Frame - 105mm - Black BM05104

Hoy Spot - Semi-recessed - 24° - 2700K - White

Foster + Partners Industrial Design



IP20   CE



LUMINAIRE

- Watt: **19W**
- Voltage: **220-240V**
- Delivered lumen output: **1771lm**
- CCT: **2700K**
- Efficiency: **78%**
- Efficacy: **93.19lm/W**
- CRI: **90**

Notes

Driver supplied separately.
Fitting to be completed with installation frame.

FEATURES

- Product Code: **BM00301**
- Colour: **White**
- Installation: **RecessedProjector**
- Series: **Architectural Indoor**
- Environment: **Indoor**
- design by: **Foster + Partners Industrial Design**

DIMENSIONS

- Height: **103 mm**
- Diameter: **90 mm**
- Cutout diameter: **95 mm**
- Recessed depth: **34 mm**
- Inclination: **90°**
- Rotation: **360°**
- Cutout shape: **Rounded**

SOURCES INCLUDED

- Category: **Led**
- Number: **1**
- Watt: **19W**
- Color Tolerance: **MacAdam 3SDCM**
- Service Life: **L70 (6K) 50000h**

Accessories

NO
IMAGE
AVAILABLE

Driver cc 32-36W - 700mA - 220-240 Vac -
103x67x21 (LxWxH) - Dimmable DALI M079200

NO
IMAGE
AVAILABLE

DRIVER cc 32-36W - 700mA - 220-240 - 103x67x21
(LxWxH) - Dimmable PUSH/1-10V M079300



Driver 15-32W 350-725mA - 220-24Vac -
146,5x43,5x22 mm (LxWxH) - Undimmable
dv1030

NO
IMAGE
AVAILABLE

Driver 23W 550mA - 220-24Vac - 146,5x43,5x22
mm (LxWxH) - APP Dimmable DV1062APP



Trimless Frame BM05000



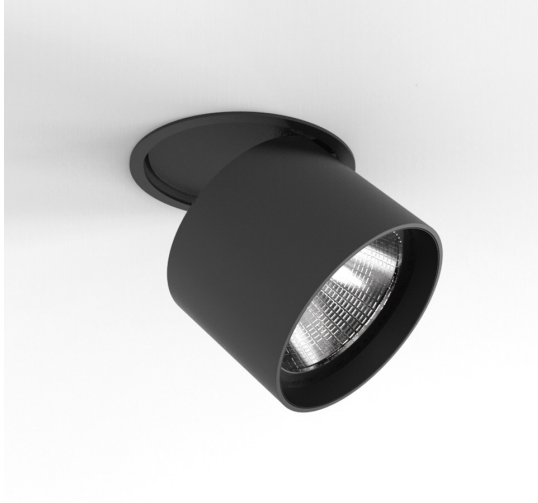
Trim Frame - 105mm - White BM05101



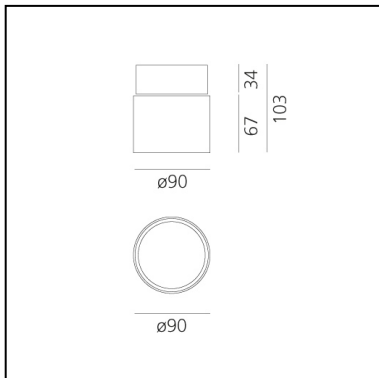
Trim Frame - 105mm - Black BM05104

Hoy Spot - Semi-recessed - 24° - 3000K - Black

Foster + Partners Industrial Design



IP20   



LUMINAIRE

- Watt: **19W**
- Voltage: **220-240V**
- Delivered lumen output: **1896lm**
- CCT: **3000K**
- Efficiency: **78%**
- Efficacy: **99.78lm/W**
- CRI: **90**

Notes

Driver supplied separately.
Fitting to be completed with installation frame.

FEATURES

- Product Code: **BM00404**
- Colour: **Black**
- Installation: **RecessedProjector**
- Series: **Architectural Indoor**
- Environment: **Indoor**
- design by: **Foster + Partners Industrial Design**

DIMENSIONS

- Height: **103 mm**
- Diameter: **90 mm**
- Cutout diameter: **95 mm**
- Recessed depth: **34 mm**
- Inclination: **90°**
- Rotation: **360°**
- Cutout shape: **Rounded**

SOURCES INCLUDED

- Category: **Led**
- Number: **1**
- Watt: **19W**
- Color Tolerance: **MacAdam 3SDCM**
- Service Life: **L70 (6K) 50000h**

Accessories

NO
IMAGE
AVAILABLE

Driver cc 32-36W - 700mA - 220-240 Vac -
103x67x21 (LxWxH) - Dimmable DALI M079200

NO
IMAGE
AVAILABLE

DRIVER cc 32-36W - 700mA - 220-240 - 103x67x21
(LxWxH) - Dimmable PUSH/1-10V M079300



Driver 15-32W 350-725mA - 220-24Vac -
146,5x43,5x22 mm (LxWxH) - Undimmable
dv1030

NO
IMAGE
AVAILABLE

Driver 23W 550mA - 220-24Vac - 146,5x43,5x22
mm (LxWxH) - APP Dimmable DV1062APP



Trimless Frame BM05000



Trim Frame - 105mm - White BM05101



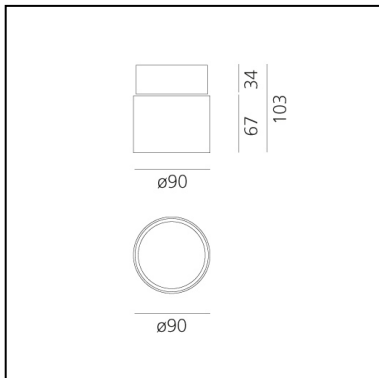
Trim Frame - 105mm - Black BM05104

Hoy Spot - Semi-recessed - 24° - 3000K - White

Foster + Partners Industrial
Design



IP20   



LUMINAIRE

- Watt: **19W**
- Voltage: **220-240V**
- Delivered lumen output: **1896lm**
- CCT: **3000K**
- Efficiency: **78%**
- Efficacy: **99.78lm/W**
- CRI: **90**

Notes

Driver supplied separately.
Fitting to be completed with installation frame.

FEATURES

- Product Code: **BM00401**
- Colour: **White**
- Installation: **RecessedProjector**
- Series: **Architectural Indoor**
- Environment: **Indoor**
- design by: **Foster + Partners Industrial Design**

DIMENSIONS

- Height: **103 mm**
- Diameter: **90 mm**
- Cutout diameter: **95 mm**
- Recessed depth: **34 mm**
- Inclination: **90°**
- Rotation: **360°**
- Cutout shape: **Rounded**

SOURCES INCLUDED

- Category: **Led**
- Number: **1**
- Watt: **19W**
- Color Tolerance: **MacAdam 3SDCM**
- Service Life: **L70 (6K) 50000h**

Accessories

NO
IMAGE
AVAILABLE

Driver cc 32-36W - 700mA - 220-240 Vac -
103x67x21 (LxWxH) - Dimmable DALI M079200

NO
IMAGE
AVAILABLE

DRIVER cc 32-36W - 700mA - 220-240 - 103x67x21
(LxWxH) - Dimmable PUSH/1-10V M079300



Driver 15-32W 350-725mA - 220-24Vac -
146,5x43,5x22 mm (LxWxH) - Undimmable
dv1030

NO
IMAGE
AVAILABLE

Driver 23W 550mA - 220-24Vac - 146,5x43,5x22
mm (LxWxH) - APP Dimmable DV1062APP



Trimless Frame BM05000



Trim Frame - 105mm - White BM05101



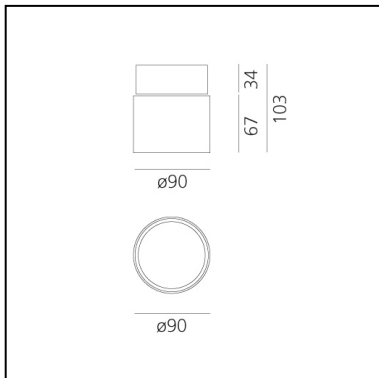
Trim Frame - 105mm - Black BM05104

Hoy Spot - Semi-recessed - 24° - 4000K - Black

Foster + Partners Industrial Design



IP20   



LUMINAIRE

- Watt: **19W**
- Voltage: **220-240V**
- Delivered lumen output: **2037lm**
- CCT: **4000K**
- Efficiency: **78%**
- Efficacy: **107.21lm/W**
- CRI: **90**

Notes

Driver supplied separately.
Fitting to be completed with installation frame.

FEATURES

- Product Code: **BM00504**
- Colour: **Black**
- Installation: **RecessedProjector**
- Series: **Architectural Indoor**
- Environment: **Indoor**
- design by: **Foster + Partners Industrial Design**

DIMENSIONS

- Height: **103 mm**
- Diameter: **90 mm**
- Cutout diameter: **95 mm**
- Recessed depth: **34 mm**
- Inclination: **90°**
- Rotation: **360°**
- Cutout shape: **Rounded**

SOURCES INCLUDED

- Category: **Led**
- Number: **1**
- Watt: **19W**
- Color Tolerance: **MacAdam 3SDCM**
- Service Life: **L70 (6K) 50000h**

Accessories

NO
IMAGE
AVAILABLE

Driver cc 32-36W - 700mA - 220-240 Vac -
103x67x21 (LxWxH) - Dimmable DALI M079200

NO
IMAGE
AVAILABLE

DRIVER cc 32-36W - 700mA - 220-240 - 103x67x21
(LxWxH) - Dimmable PUSH/1-10V M079300



Driver 15-32W 350-725mA - 220-24Vac -
146,5x43,5x22 mm (LxWxH) - Undimmable
dv1030

NO
IMAGE
AVAILABLE

Driver 23W 550mA - 220-24Vac - 146,5x43,5x22
mm (LxWxH) - APP Dimmable DV1062APP



Trimless Frame BM05000



Trim Frame - 105mm - White BM05101



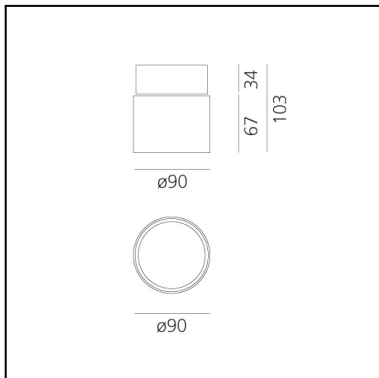
Trim Frame - 105mm - Black BM05104

Hoy Spot - Semi-recessed - 24° - 4000K - White

Foster + Partners Industrial Design



IP20   



LUMINAIRE

- Watt: **19W**
- Voltage: **220-240V**
- Delivered lumen output: **2037lm**
- CCT: **4000K**
- Efficiency: **78%**
- Efficacy: **107.21lm/W**
- CRI: **90**

Notes

Driver supplied separately.
Fitting to be completed with installation frame.

FEATURES

- Product Code: **BM00501**
- Colour: **White**
- Installation: **Recessed Projector**
- Series: **Architectural Indoor**
- Environment: **Indoor**
- design by: **Foster + Partners Industrial Design**

DIMENSIONS

- Height: **103 mm**
- Diameter: **90 mm**
- Cutout diameter: **95 mm**
- Recessed depth: **34 mm**
- Inclination: **90°**
- Rotation: **360°**
- Cutout shape: **Rounded**

SOURCES INCLUDED

- Category: **Led**
- Number: **1**
- Watt: **19W**
- Color Tolerance: **MacAdam 3SDCM**
- Service Life: **L70 (6K) 50000h**

Accessories

NO
IMAGE
AVAILABLE

Driver cc 32-36W - 700mA - 220-240 Vac -
103x67x21 (LxWxH) - Dimmable DALI M079200

NO
IMAGE
AVAILABLE

DRIVER cc 32-36W - 700mA - 220-240 - 103x67x21
(LxWxH) - Dimmable PUSH/1-10V M079300



Driver 15-32W 350-725mA - 220-24Vac -
146,5x43,5x22 mm (LxWxH) - Undimmable
dv1030

NO
IMAGE
AVAILABLE

Driver 23W 550mA - 220-24Vac - 146,5x43,5x22
mm (LxWxH) - APP Dimmable DV1062APP



Trimless Frame BM05000



Trim Frame - 105mm - White BM05101



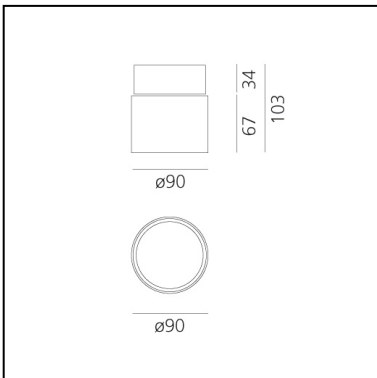
Trim Frame - 105mm - Black BM05104

Hoy Spot - Semi-recessed - 48° - 2700K - Black

Foster + Partners Industrial Design



IP20   



LUMINAIRE

- Watt: **19W**
- Voltage: **220-240V**
- Delivered lumen output: **1915lm**
- CCT: **2700K**
- Efficiency: **85%**
- Efficacy: **100.77lm/W**
- CRI: **90**

Notes

Driver supplied separately.
Fitting to be completed with installation frame.

FEATURES

- Product Code: **BM00604**
- Colour: **Black**
- Installation: **RecessedProjector**
- Series: **Architectural Indoor**
- Environment: **Indoor**
- design by: **Foster + Partners Industrial Design**

DIMENSIONS

- Height: **103 mm**
- Diameter: **90 mm**
- Cutout diameter: **95 mm**
- Recessed depth: **34 mm**
- Inclination: **90°**
- Rotation: **360°**
- Cutout shape: **Rounded**

SOURCES INCLUDED

- Category: **Led**
- Number: **1**
- Watt: **19W**
- Color Tolerance: **MacAdam 3SDCM**
- Service Life: **L70 (6K) 50000h**

Accessories

NO
IMAGE
AVAILABLE

Driver cc 32-36W - 700mA - 220-240 Vac -
103x67x21 (LxWxH) - Dimmable DALI M079200

NO
IMAGE
AVAILABLE

DRIVER cc 32-36W - 700mA - 220-240 - 103x67x21
(LxWxH) - Dimmable PUSH/1-10V M079300



Driver 15-32W 350-725mA - 220-24Vac -
146,5x43,5x22 mm (LxWxH) - Undimmable
dv1030

NO
IMAGE
AVAILABLE

Driver 23W 550mA - 220-24Vac - 146,5x43,5x22
mm (LxWxH) - APP Dimmable DV1062APP



Trimless Frame BM05000



Trim Frame - 105mm - White BM05101



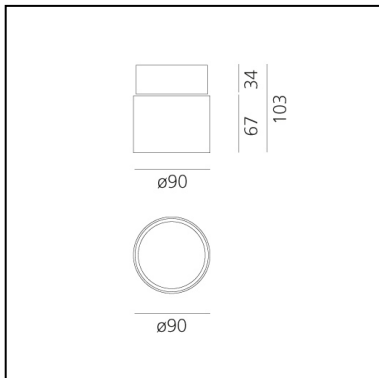
Trim Frame - 105mm - Black BM05104

Hoy Spot - Semi-recessed - 48° - 2700K - White

Foster + Partners Industrial Design



IP20   



LUMINAIRE

- Watt: **19W**
- Voltage: **220-240V**
- Delivered lumen output: **1915lm**
- CCT: **2700K**
- Efficiency: **85%**
- Efficacy: **100.77lm/W**
- CRI: **90**

Notes

Driver supplied separately.
Fitting to be completed with installation frame.

FEATURES

- Product Code: **BM00601**
- Colour: **White**
- Installation: **RecessedProjector**
- Series: **Architectural Indoor**
- Environment: **Indoor**
- design by: **Foster + Partners Industrial Design**

DIMENSIONS

- Height: **103 mm**
- Diameter: **90 mm**
- Cutout diameter: **95 mm**
- Recessed depth: **34 mm**
- Inclination: **90°**
- Rotation: **360°**
- Cutout shape: **Rounded**

SOURCES INCLUDED

- Category: **Led**
- Number: **1**
- Watt: **19W**
- Color Tolerance: **MacAdam 3SDCM**
- Service Life: **L70 (6K) 50000h**

Accessories

NO
IMAGE
AVAILABLE

Driver cc 32-36W - 700mA - 220-240 Vac -
103x67x21 (LxWxH) - Dimmable DALI M079200

NO
IMAGE
AVAILABLE

DRIVER cc 32-36W - 700mA - 220-240 - 103x67x21
(LxWxH) - Dimmable PUSH/1-10V M079300



Driver 15-32W 350-725mA - 220-24Vac -
146,5x43,5x22 mm (LxWxH) - Undimmable
dv1030

NO
IMAGE
AVAILABLE

Driver 23W 550mA - 220-24Vac - 146,5x43,5x22
mm (LxWxH) - APP Dimmable DV1062APP



Trimless Frame BM05000



Trim Frame - 105mm - White BM05101



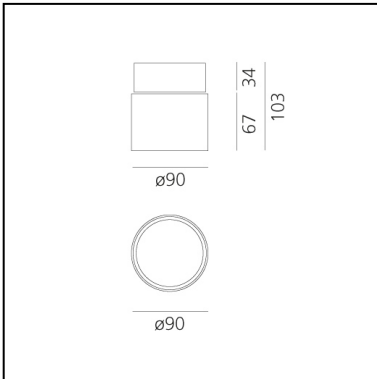
Trim Frame - 105mm - Black BM05104

Hoy Spot - Semi-recessed - 48° - 3000K - Black

Foster + Partners Industrial Design



IP20   



LUMINAIRE

- Watt: **19W**
- Voltage: **220-240V**
- Delivered lumen output: **1915lm**
- CCT: **3000K**
- Efficiency: **85%**
- Efficacy: **100.77lm/W**
- CRI: **90**

Notes

Driver supplied separately.
Fitting to be completed with installation frame.

FEATURES

- Product Code: **BM00704**
- Colour: **Black**
- Installation: **RecessedProjector**
- Series: **Architectural Indoor**
- Environment: **Indoor**
- design by: **Foster + Partners Industrial Design**

DIMENSIONS

- Height: **103 mm**
- Diameter: **90 mm**
- Cutout diameter: **95 mm**
- Recessed depth: **34 mm**
- Inclination: **90°**
- Rotation: **360°**
- Cutout shape: **Rounded**

SOURCES INCLUDED

- Category: **Led**
- Number: **1**
- Watt: **19W**
- Color Tolerance: **MacAdam 3SDCM**
- Service Life: **L70 (6K) 50000h**

Accessories

NO
IMAGE
AVAILABLE

Driver cc 32-36W - 700mA - 220-240 Vac -
103x67x21 (LxWxH) - Dimmable DALI M079200

NO
IMAGE
AVAILABLE

DRIVER cc 32-36W - 700mA - 220-240 - 103x67x21
(LxWxH) - Dimmable PUSH/1-10V M079300



Driver 15-32W 350-725mA - 220-24Vac -
146,5x43,5x22 mm (LxWxH) - Undimmable
dv1030

NO
IMAGE
AVAILABLE

Driver 23W 550mA - 220-24Vac - 146,5x43,5x22
mm (LxWxH) - APP Dimmable DV1062APP



Trimless Frame BM05000



Trim Frame - 105mm - White BM05101



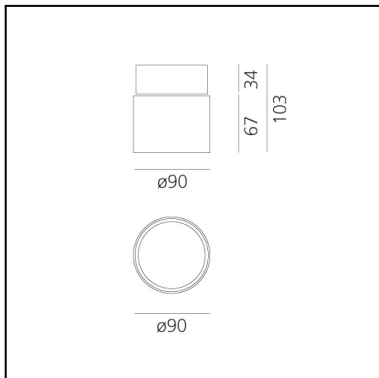
Trim Frame - 105mm - Black BM05104

Hoy Spot - Semi-recessed - 48° - 3000K - White

Foster + Partners Industrial
Design



IP20   



LUMINAIRE

- Watt: **19W**
- Voltage: **220-240V**
- Delivered lumen output: **1915lm**
- CCT: **3000K**
- Efficiency: **85%**
- Efficacy: **100.77lm/W**
- CRI: **90**

Notes

Driver supplied separately.
Fitting to be completed with installation frame.

FEATURES

- Product Code: **BM00701**
- Colour: **White**
- Installation: **RecessedProjector**
- Series: **Architectural Indoor**
- Environment: **Indoor**
- design by: **Foster + Partners Industrial Design**

DIMENSIONS

- Height: **103 mm**
- Diameter: **90 mm**
- Cutout diameter: **95 mm**
- Recessed depth: **34 mm**
- Inclination: **90°**
- Rotation: **360°**
- Cutout shape: **Rounded**

SOURCES INCLUDED

- Category: **Led**
- Number: **1**
- Watt: **19W**
- Color Tolerance: **MacAdam 3SDCM**
- Service Life: **L70 (6K) 50000h**

Accessories

NO
IMAGE
AVAILABLE

Driver cc 32-36W - 700mA - 220-240 Vac -
103x67x21 (LxWxH) - Dimmable DALI M079200

NO
IMAGE
AVAILABLE

DRIVER cc 32-36W - 700mA - 220-240 - 103x67x21
(LxWxH) - Dimmable PUSH/1-10V M079300



Driver 15-32W 350-725mA - 220-24Vac -
146,5x43,5x22 mm (LxWxH) - Undimmable
dv1030

NO
IMAGE
AVAILABLE

Driver 23W 550mA - 220-24Vac - 146,5x43,5x22
mm (LxWxH) - APP Dimmable DV1062APP



Trimless Frame BM05000



Trim Frame - 105mm - White BM05101



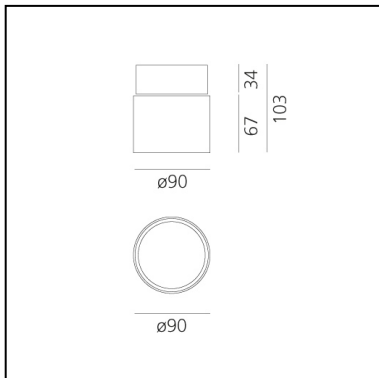
Trim Frame - 105mm - Black BM05104

Hoy Spot - Semi-recessed - 48° - 4000K - Black

Foster + Partners Industrial Design



IP20   



FEATURES

- Product Code: **BM00804**
- Colour: **Black**
- Installation: **Recessed Projector**
- Series: **Architectural Indoor**
- Environment: **Indoor**
- design by: **Foster + Partners Industrial Design**

DIMENSIONS

- Height: **103 mm**
- Diameter: **90 mm**
- Cutout diameter: **95 mm**
- Recessed depth: **34 mm**
- Inclination: **90°**
- Rotation: **360°**
- Cutout shape: **Rounded**

SOURCES INCLUDED

- Category: **Led**
- Number: **1**
- Watt: **19W**
- Color Tolerance: **MacAdam 3SDCM**
- Service Life: **L70 (6K) 50000h**

LUMINAIRE

- Watt: **19W**
- Voltage: **220-240V**
- Delivered lumen output: **2203lm**
- CCT: **4000K**
- Efficiency: **85%**
- Efficacy: **115.93lm/W**
- CRI: **90**

Notes

Driver supplied separately.
Fitting to be completed with installation frame.

Accessories

NO
IMAGE
AVAILABLE

Driver cc 32-36W - 700mA - 220-240 Vac -
103x67x21 (LxWxH) - Dimmable DALI M079200

NO
IMAGE
AVAILABLE

DRIVER cc 32-36W - 700mA - 220-240 - 103x67x21
(LxWxH) - Dimmable PUSH/1-10V M079300



Driver 15-32W 350-725mA - 220-24Vac -
146,5x43,5x22 mm (LxWxH) - Undimmable
dv1030

NO
IMAGE
AVAILABLE

Driver 23W 550mA - 220-24Vac - 146,5x43,5x22
mm (LxWxH) - APP Dimmable DV1062APP



Trimless Frame BM05000



Trim Frame - 105mm - White BM05101



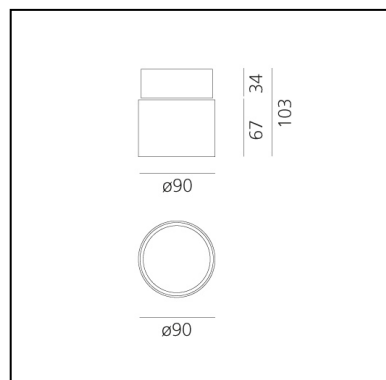
Trim Frame - 105mm - Black BM05104

Hoy Spot - Semi-recessed - 48° - 4000K - White

Foster + Partners Industrial Design



IP20   



LUMINAIRE

- Watt: **19W**
- Voltage: **220-240V**
- Delivered lumen output: **2203lm**
- CCT: **4000K**
- Efficiency: **85%**
- Efficacy: **115.93lm/W**
- CRI: **90**

Notes

Driver supplied separately.
Fitting to be completed with installation frame.

FEATURES

- Product Code: **BM00801**
- Colour: **White**
- Installation: **RecessedProjector**
- Series: **Architectural Indoor**
- Environment: **Indoor**
- design by: **Foster + Partners Industrial Design**

DIMENSIONS

- Height: **103 mm**
- Diameter: **90 mm**
- Cutout diameter: **95 mm**
- Recessed depth: **34 mm**
- Inclination: **90°**
- Rotation: **360°**
- Cutout shape: **Rounded**

SOURCES INCLUDED

- Category: **Led**
- Number: **1**
- Watt: **19W**
- Color Tolerance: **MacAdam 3SDCM**
- Service Life: **L70 (6K) 50000h**

Accessories

NO
IMAGE
AVAILABLE

Driver cc 32-36W - 700mA - 220-240 Vac -
103x67x21 (LxWxH) - Dimmable DALI M079200

NO
IMAGE
AVAILABLE

DRIVER cc 32-36W - 700mA - 220-240 - 103x67x21
(LxWxH) - Dimmable PUSH/1-10V M079300



Driver 15-32W 350-725mA - 220-24Vac -
146,5x43,5x22 mm (LxWxH) - Undimmable
dv1030

NO
IMAGE
AVAILABLE

Driver 23W 550mA - 220-24Vac - 146,5x43,5x22
mm (LxWxH) - APP Dimmable DV1062APP



Trimless Frame BM05000



Trim Frame - 105mm - White BM05101



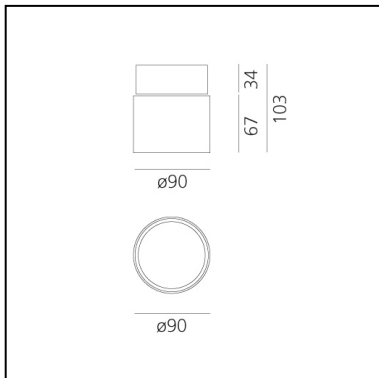
Trim Frame - 105mm - Black BM05104

Hoy Spot - Semi-recessed - 68° - 2700K - Black

Foster + Partners Industrial Design



IP20   



LUMINAIRE

- Watt: **19W**
- Voltage: **220-240V**
- Delivered lumen output: **1796lm**
- CCT: **2700K**
- Efficiency: **79%**
- Efficacy: **94.51lm/W**
- CRI: **90**

Notes

Driver supplied separately.
Fitting to be completed with installation frame.

FEATURES

- Product Code: **BM02004**
- Colour: **Black**
- Installation: **RecessedProjector**
- Series: **Architectural Indoor**
- Environment: **Indoor**
- design by: **Foster + Partners Industrial Design**

DIMENSIONS

- Height: **103 mm**
- Diameter: **90 mm**
- Cutout diameter: **95 mm**
- Recessed depth: **34 mm**
- Inclination: **90°**
- Rotation: **360°**
- Cutout shape: **Rounded**

SOURCES INCLUDED

- Category: **Led**
- Number: **1**
- Watt: **19W**
- Color Tolerance: **MacAdam 3SDCM**
- Service Life: **L70 (6K) 50000h**

Accessories

NO
IMAGE
AVAILABLE

Driver cc 32-36W - 700mA - 220-240 Vac -
103x67x21 (LxWxH) - Dimmable DALI M079200

NO
IMAGE
AVAILABLE

DRIVER cc 32-36W - 700mA - 220-240 - 103x67x21
(LxWxH) - Dimmable PUSH/1-10V M079300



Driver 15-32W 350-725mA - 220-24Vac -
146,5x43,5x22 mm (LxWxH) - Undimmable
dv1030

NO
IMAGE
AVAILABLE

Driver 23W 550mA - 220-24Vac - 146,5x43,5x22
mm (LxWxH) - APP Dimmable DV1062APP



Trimless Frame BM05000



Trim Frame - 105mm - White BM05101



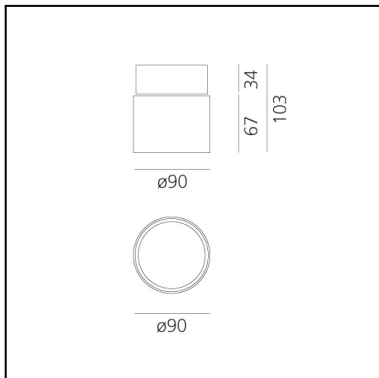
Trim Frame - 105mm - Black BM05104

Hoy Spot - Semi-recessed - 68° - 2700K - White

Foster + Partners Industrial Design



IP20   CE



LUMINAIRE

- Watt: **19W**
- Voltage: **220-240V**
- Delivered lumen output: **1796lm**
- CCT: **2700K**
- Efficiency: **79%**
- Efficacy: **94.51lm/W**
- CRI: **90**

Notes

Driver supplied separately.
Fitting to be completed with installation frame.

FEATURES

- Product Code: **BM02001**
- Colour: **White**
- Installation: **RecessedProjector**
- Series: **Architectural Indoor**
- Environment: **Indoor**
- design by: **Foster + Partners Industrial Design**

DIMENSIONS

- Height: **103 mm**
- Diameter: **90 mm**
- Cutout diameter: **95 mm**
- Recessed depth: **34 mm**
- Inclination: **90°**
- Rotation: **360°**
- Cutout shape: **Rounded**

SOURCES INCLUDED

- Category: **Led**
- Number: **1**
- Watt: **19W**
- Color Tolerance: **MacAdam 3SDCM**
- Service Life: **L70 (6K) 50000h**

Accessories

NO
IMAGE
AVAILABLE

Driver cc 32-36W - 700mA - 220-240 Vac -
103x67x21 (LxWxH) - Dimmable DALI M079200

NO
IMAGE
AVAILABLE

DRIVER cc 32-36W - 700mA - 220-240 - 103x67x21
(LxWxH) - Dimmable PUSH/1-10V M079300



Driver 15-32W 350-725mA - 220-24Vac -
146,5x43,5x22 mm (LxWxH) - Undimmable
dv1030

NO
IMAGE
AVAILABLE

Driver 23W 550mA - 220-24Vac - 146,5x43,5x22
mm (LxWxH) - APP Dimmable DV1062APP



Trimless Frame BM05000



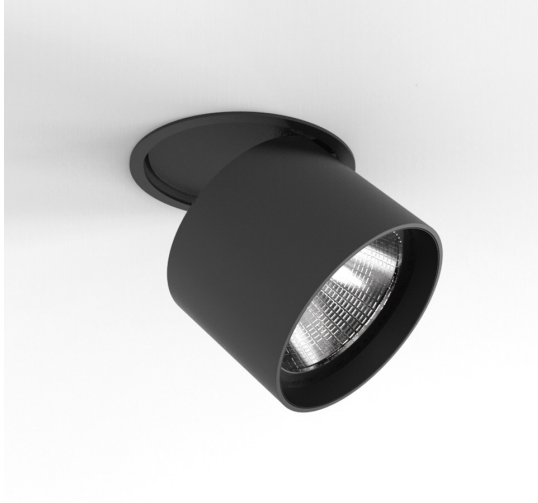
Trim Frame - 105mm - White BM05101



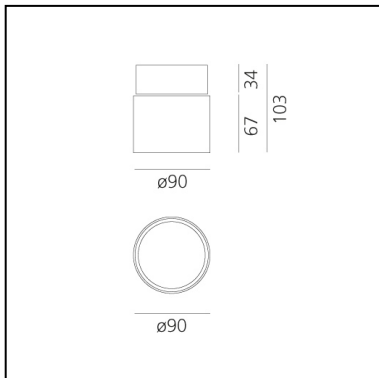
Trim Frame - 105mm - Black BM05104

Hoy Spot - Semi-recessed - 68° - 3000K - Black

Foster + Partners Industrial Design



IP20   



FEATURES

- Product Code: **BM02104**
- Colour: **Black**
- Installation: **RecessedProjector**
- Series: **Architectural Indoor**
- Environment: **Indoor**
- design by: **Foster + Partners Industrial Design**

DIMENSIONS

- Height: **103 mm**
- Diameter: **90 mm**
- Cutout diameter: **95 mm**
- Recessed depth: **34 mm**
- Inclination: **90°**
- Rotation: **360°**
- Cutout shape: **Rounded**

SOURCES INCLUDED

- Category: **Led**
- Number: **1**
- Watt: **19W**
- Color Tolerance: **MacAdam 3SDCM**
- Service Life: **L70 (6K) 50000h**

LUMINAIRE

- Watt: **19W**
- Voltage: **220-240V**
- Delivered lumen output: **1923lm**
- CCT: **3000K**
- Efficiency: **79%**
- Efficacy: **101.21lm/W**
- CRI: **90**

Notes

Driver supplied separately.
Fitting to be completed with installation frame.

Accessories

NO
IMAGE
AVAILABLE

Driver cc 32-36W - 700mA - 220-240 Vac -
103x67x21 (LxWxH) - Dimmable DALI M079200

NO
IMAGE
AVAILABLE

DRIVER cc 32-36W - 700mA - 220-240 - 103x67x21
(LxWxH) - Dimmable PUSH/1-10V M079300



Driver 15-32W 350-725mA - 220-24Vac -
146,5x43,5x22 mm (LxWxH) - Undimmable
dv1030

NO
IMAGE
AVAILABLE

Driver 23W 550mA - 220-24Vac - 146,5x43,5x22
mm (LxWxH) - APP Dimmable DV1062APP



Trimless Frame BM05000



Trim Frame - 105mm - White BM05101



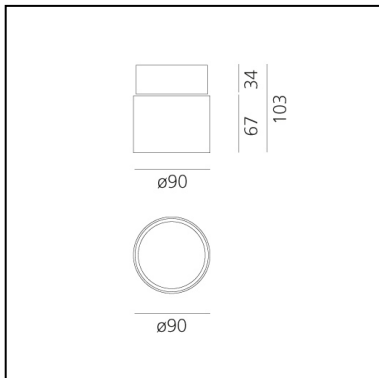
Trim Frame - 105mm - Black BM05104

Hoy Spot - Semi-recessed - 68° - 3000K - White

Foster + Partners Industrial
Design



IP20   



FEATURES

- Product Code: **BM02101**
- Colour: **White**
- Installation: **Recessed Projector**
- Series: **Architectural Indoor**
- Environment: **Indoor**
- design by: **Foster + Partners Industrial Design**

DIMENSIONS

- Height: **103 mm**
- Diameter: **90 mm**
- Cutout diameter: **95 mm**
- Recessed depth: **34 mm**
- Inclination: **90°**
- Rotation: **360°**
- Cutout shape: **Rounded**

SOURCES INCLUDED

- Category: **Led**
- Number: **1**
- Watt: **19W**
- Color Tolerance: **MacAdam 3SDCM**
- Service Life: **L70 (6K) 50000h**

LUMINAIRE

- Watt: **19W**
- Voltage: **220-240V**
- Delivered lumen output: **1923lm**
- CCT: **3000K**
- Efficiency: **79%**
- Efficacy: **101.21lm/W**
- CRI: **90**

Notes

Driver supplied separately.
Fitting to be completed with installation frame.

Accessories

NO
IMAGE
AVAILABLE

Driver cc 32-36W - 700mA - 220-240 Vac -
103x67x21 (LxWxH) - Dimmable DALI M079200

NO
IMAGE
AVAILABLE

DRIVER cc 32-36W - 700mA - 220-240 - 103x67x21
(LxWxH) - Dimmable PUSH/1-10V M079300



Driver 15-32W 350-725mA - 220-24Vac -
146,5x43,5x22 mm (LxWxH) - Undimmable
dv1030

NO
IMAGE
AVAILABLE

Driver 23W 550mA - 220-24Vac - 146,5x43,5x22
mm (LxWxH) - APP Dimmable DV1062APP



Trimless Frame BM05000



Trim Frame - 105mm - White BM05101



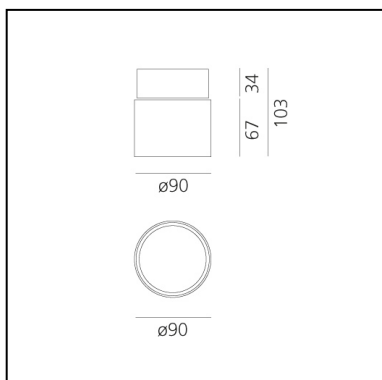
Trim Frame - 105mm - Black BM05104

Hoy Spot - Semi-recessed - 68° - 4000K - Black

Foster + Partners Industrial Design



IP20   



LUMINAIRE

- Watt: **19W**
- Voltage: **220-240V**
- Delivered lumen output: **2066lm**
- CCT: **4000K**
- Efficiency: **79%**
- Efficacy: **108.73lm/W**
- CRI: **90**

Notes

Driver supplied separately.
Fitting to be completed with installation frame.

FEATURES

- Product Code: **BM02204**
- Colour: **Black**
- Installation: **RecessedProjector**
- Series: **Architectural Indoor**
- Environment: **Indoor**
- design by: **Foster + Partners Industrial Design**

DIMENSIONS

- Height: **103 mm**
- Diameter: **90 mm**
- Cutout diameter: **95 mm**
- Recessed depth: **34 mm**
- Inclination: **90°**
- Rotation: **360°**
- Cutout shape: **Rounded**

SOURCES INCLUDED

- Category: **Led**
- Number: **1**
- Watt: **19W**
- Color Tolerance: **MacAdam 3SDCM**
- Service Life: **L70 (6K) 50000h**

Accessories

NO
IMAGE
AVAILABLE

Driver cc 32-36W - 700mA - 220-240 Vac -
103x67x21 (LxWxH) - Dimmable DALI M079200

NO
IMAGE
AVAILABLE

DRIVER cc 32-36W - 700mA - 220-240 - 103x67x21
(LxWxH) - Dimmable PUSH/1-10V M079300



Driver 15-32W 350-725mA - 220-24Vac -
146,5x43,5x22 mm (LxWxH) - Undimmable
dv1030

NO
IMAGE
AVAILABLE

Driver 23W 550mA - 220-24Vac - 146,5x43,5x22
mm (LxWxH) - APP Dimmable DV1062APP



Trimless Frame BM05000



Trim Frame - 105mm - White BM05101



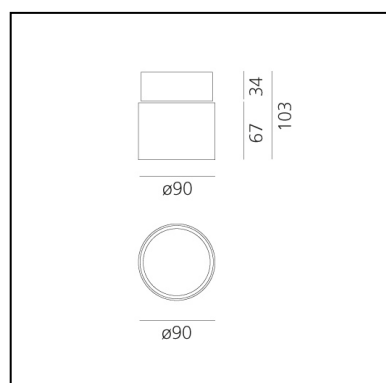
Trim Frame - 105mm - Black BM05104

Hoy Spot - Semi-recessed - 68° - 4000K - White

Foster + Partners Industrial Design



IP20   



LUMINAIRE

- Watt: **19W**
- Voltage: **220-240V**
- Delivered lumen output: **2066lm**
- CCT: **4000K**
- Efficiency: **79%**
- Efficacy: **108.73lm/W**
- CRI: **90**

Notes

Driver supplied separately.
Fitting to be completed with installation frame.

FEATURES

- Product Code: **BM02201**
- Colour: **White**
- Installation: **RecessedProjector**
- Series: **Architectural Indoor**
- Environment: **Indoor**
- design by: **Foster + Partners Industrial Design**

DIMENSIONS

- Height: **103 mm**
- Diameter: **90 mm**
- Cutout diameter: **95 mm**
- Recessed depth: **34 mm**
- Inclination: **90°**
- Rotation: **360°**
- Cutout shape: **Rounded**

SOURCES INCLUDED

- Category: **Led**
- Number: **1**
- Watt: **19W**
- Color Tolerance: **MacAdam 3SDCM**
- Service Life: **L70 (6K) 50000h**

Accessories

NO
IMAGE
AVAILABLE

Driver cc 32-36W - 700mA - 220-240 Vac -
103x67x21 (LxWxH) - Dimmable DALI M079200

NO
IMAGE
AVAILABLE

DRIVER cc 32-36W - 700mA - 220-240 - 103x67x21
(LxWxH) - Dimmable PUSH/1-10V M079300



Driver 15-32W 350-725mA - 220-24Vac -
146,5x43,5x22 mm (LxWxH) - Undimmable
dv1030

NO
IMAGE
AVAILABLE

Driver 23W 550mA - 220-24Vac - 146,5x43,5x22
mm (LxWxH) - APP Dimmable DV1062APP



Trimless Frame BM05000



Trim Frame - 105mm - White BM05101



Trim Frame - 105mm - Black BM05104