

ALGORITMO LED SURFACE STANDALONE

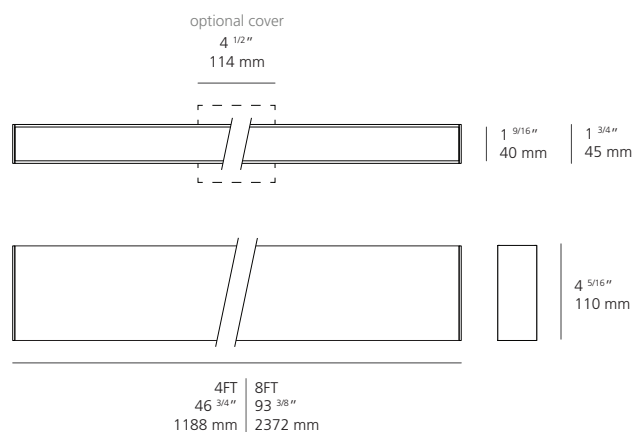
Design Carlotta de Bevilacqua, Paola di Arianello

MODULE

CODE

#CAT	MOUNTING	LENGTH	CRI	CCT	OPTICS	DRIVER	COLOR	QUANTITY
USC-MAL	KC	—	8	—	—	08	—	

Mounting	KC = Surface Standalone
Length	4 = 4 Feet 8 = 8 Feet
CRI	8 = 80 CRI min
CCT	30 = 3000K 35 = 3500K
Optics	C = Controlled Emission D = Diffused P = Prismoptic
Driver	08 = On/Off + 0-10V dim (120/277V)
Color	B = Black S = Silver W = White




TECHNICAL DATA: (80 CRI 3000K model ratings)

Construction: Structural body in extruded aluminum with color-matched end caps, finished in powder coat paint. Internal gear plate with LED driver and array modules mounted on an independent heatsink for better heat dissipation. Clip-in polycarbonate optics for a controlled beam (shown on next page).

Mounting: Mounts to wall or ceiling (hardware not included). Color-matched junction box cover provided, but removable in case of armored cable connection (BX pigtail)

Notes: For all other finishes, LED CCT, lengths and custom requests, please contact your local Artemide sales representative.

Label:  - suitable for dry locations

	ALGORITMO STANDALONE 80CRI 3000K					
	4FT DIRECT EMISSION			8FT DIRECT EMISSION		
Input Power:	34W			68W		
Input Current:	120VAC	277VAC		120VAC	277VAC	
	0.28A	0.12A		0.57A	0.25A	
Nominal Lumen:	4480lm			8960lm		
Delivered Lumen:	Controlled	Diffused	Prismoptic	Controlled	Diffused	Prismoptic
	1568.6lm	1960.7lm	2527.1lm	3137.2lm	3921.4lm	5054.2lm
Efficacy (lm/W):	46.1lm/W	57.7lm/W	74.3lm/W	46.1lm/W	57.7lm/W	74.3lm/W
Efficiency (%):	35.0%	43.8%	56.4%	35.0%	43.8%	56.4%

See following page for optics specifications and description.

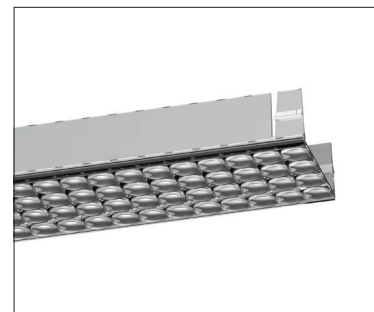
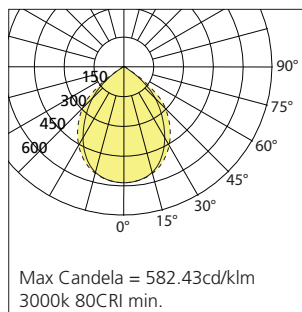
ALGORITMO LED SURFACE STANDALONE

Design Carlotta de Bevilacqua, Paola di Arianello

LINEAR OPTICS

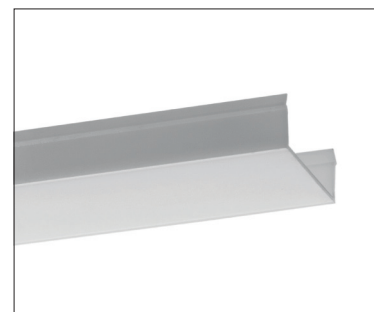
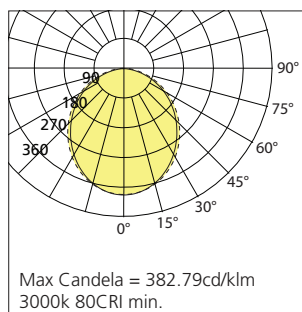
CONTROLLED EMISSION OPTICS

Injection-molded polycarbonate snap-in diffuser, with precise optical lens array for glare and emission control. Provides a narrower beam.



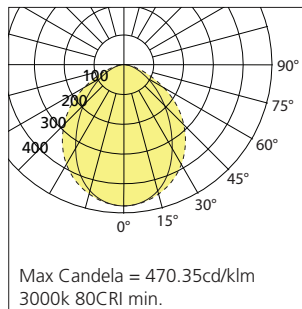
DIFFUSED OPTICS

Extruded polycarbonate snap-in diffuser, opal white color. Prevents LED pixelation with its soft uniform glow.



PRISMOPTIC LENS OPTICS

Extruded polycarbonate snap-in diffuser, with light-guiding grid. Controls glare by altering the angle of incidence of the ray, therefore minimizing output loss.



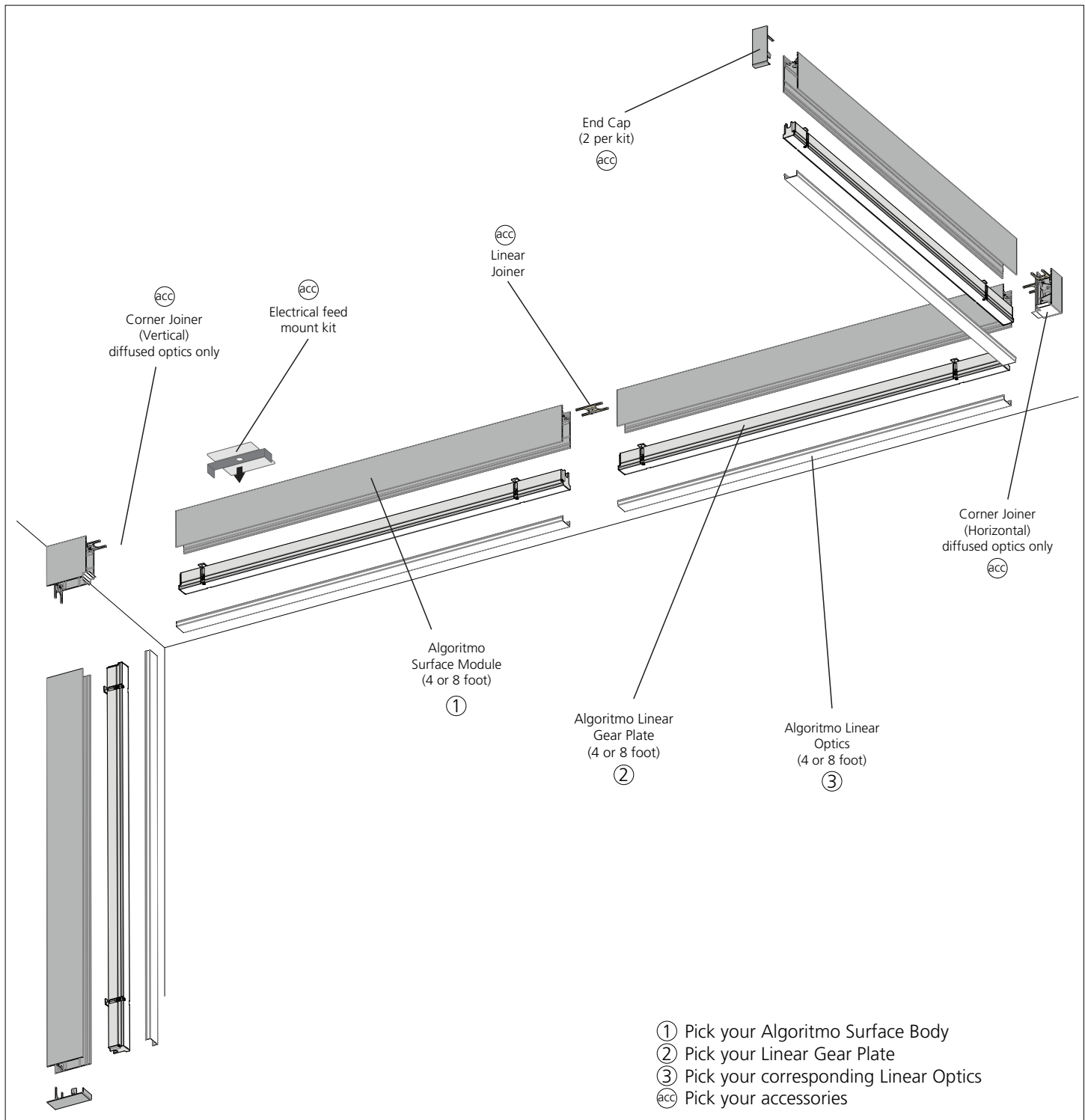
ALGORITMO LED SYSTEM - SURFACE MOUNT

Design Carlotta de Bevilacqua, Paola di Arianello

LAYOUT

SYSTEM CONFIGURATION EXAMPLE

Compose your system with the help of the example below. All components can be found on the following pages and need to be ordered separately.



ALGORITMO LED SYSTEM - SURFACE MOUNT

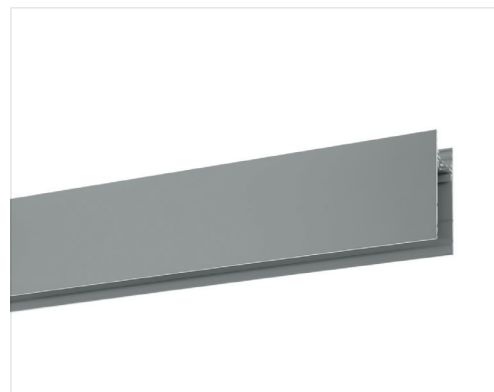
Design Carlotta de Bevilacqua, Paola di Arianello

BODY

CODE

#CAT	MOUNTING	LENGTH	COLOR	QUANTITY
USC-MAL	C	—	—	

Mounting	C = Surface Mount
Length	4 = 4 Feet 8 = 8 Feet
Body color	B = Black S = Silver W = White

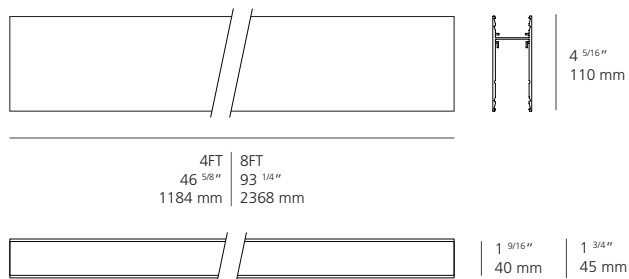


FEATURES:

Construction: Modular structural body in extruded aluminum with powder coat finish.

Mounting: Mounts to wall or ceiling with included internal brackets (hardware not included). Gear Plate, Linear diffuser optics and other accessories sold separately. Electrical feed mount kit, end caps and joiners sold separately; see following pages.

Notes: For all other finishes, lengths and custom requests, please contact your local Artemide sales representative.



ALGORITMO LED SYSTEM - SURFACE MOUNT

Design Carlotta de Bevilacqua, Paola di Arianello

GEAR PLATE

CODE

#CAT	TYPE	EMISSION	LENGTH	CRI	CCT	DRIVER	QUANTITY
USC-MAL	G	D	—	8	—	—	

Type	G = Gear Plate
Emission	D = Direct
Length	4 = 4 Feet 8 = 8 Feet
CRI	8 = 80 CRI min
CCT	30 = 3000K 35 = 3500K 40 = 4000K
Driver	08 = On/Off + 0-10V dim (120/277V) 15 = On/Off + 0-10V dim (347V) DU = DALI (120/277V)

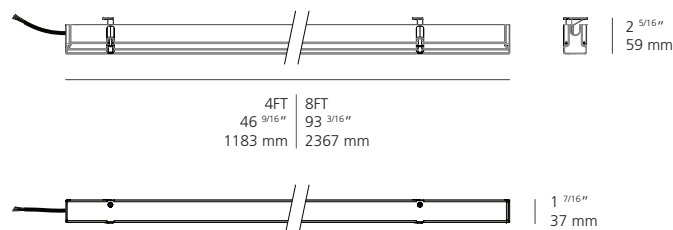


TECHNICAL DATA: (80 CRI 3000K model ratings)

Lamping: Internal gear plate with LED driver and linear LED array mounted on an independent heatsink for better heat dissipation. 3-step MacAdam ellipse.

Notes: Max rating for cumulative gear plates in a system: 6A per circuit.
For custom requests, please contact your local Artemide sales representative.

Label:  - suitable for dry locations



	ALGORITMO SYSTEM 80CRI 3000K					
	4FT DIRECT EMISSION			8FT DIRECT EMISSION		
Input Power:	34W			68W		
Input Current:	120VAC	277VAC		120VAC	277VAC	
	0.28A	0.12A		0.57A	0.25A	
Nominal Lumen:	4480lm			8960lm		
Delivered Lumen:	Controlled	Diffused	Prismoptic	Controlled	Diffused	Prismoptic
	1568.6lm	1960.7lm	2527.1lm	3137.2lm	3921.4lm	5054.2lm
Efficacy (lm/W):	46.1lm/W	57.7lm/W	74.3lm/W	46.1lm/W	57.7lm/W	74.3lm/W
Efficiency (%):	35.0%	43.8%	56.4%	35.0%	43.8%	56.4%

See following page for optics specifications and description.

ALGORITMO LED SYSTEM - SURFACE MOUNT

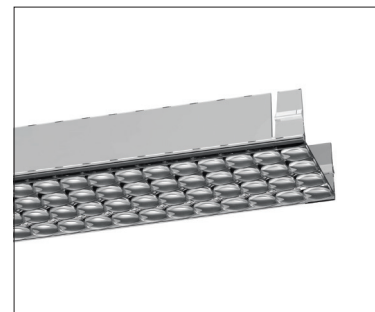
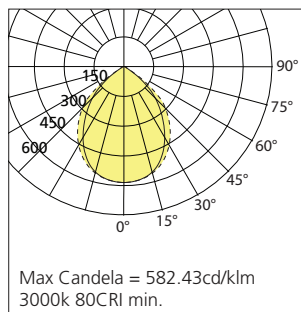
Design Carlotta de Bevilacqua, Paola di Arianello

LINEAR OPTICS

CONTROLLED EMISSION OPTICS

#CAT	LENGTH	QUANTITY
USC-MALDC	—	
Length 04 = 4 Feet 08 = 8 Feet		

Injection-molded polycarbonate snap-in diffuser, with precise optical lens array for glare and emission control. Provides a narrower beam.

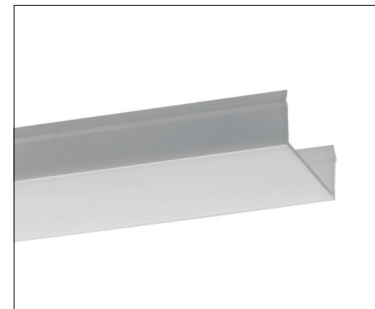
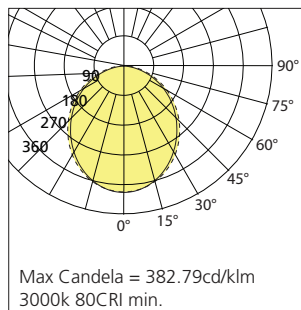


DIFFUSED OPTICS

#CAT	LENGTH	QUANTITY
USC-MALDD	—	
Length 04 = 4 Feet 08 = 8 Feet 12 = 12 Feet*		

Extruded polycarbonate snap-in diffuser, opal white color. Prevents LED pixelation with its soft uniform glow.

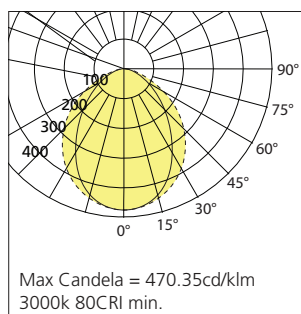
*12 foot diffuser allows for longer linear sections without interruption



PRISMOPTIC LENS OPTICS

#CAT	LENGTH	QUANTITY
USC-MALDP	—	
Length 04 = 4 Feet 08 = 8 Feet		

Extruded polycarbonate snap-in diffuser, with light-guiding grid. Controls glare by altering the angle of incidence of the ray, therefore minimizing output loss.



ALGORITMO LED SYSTEM - SURFACE MOUNT

Design Carlotta de Bevilacqua, Paola di Arianello

ACCESSORIES

ELECTRICAL FEED MOUNT KIT FOR SURFACE MODULES (ARMORED CABLE/BX PIGTAIL)

#CAT	QUANTITY
USC-MALCBX	

Allows connection of an armored cable (BX) to the fixture. Maximum number of modules per feed must not exceed 6A. Must be mounted 12 inches or less from fixture end.

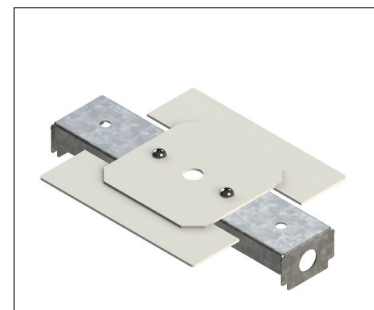


ELECTRICAL FEED MOUNT KIT FOR SURFACE MODULES (JUNCTION BOX WIRING COVER)

#CAT	COLOR	QUANTITY
USC-MALCJB	—	

Color	B = Black S = Silver W = White
-------	---

Allows connection of the fixture by covering the electrical junction box. Cover in color-matched powder coat finish. Maximum number of modules per feed must not exceed 6A. Must be mounted 12 inches or less from fixture end.

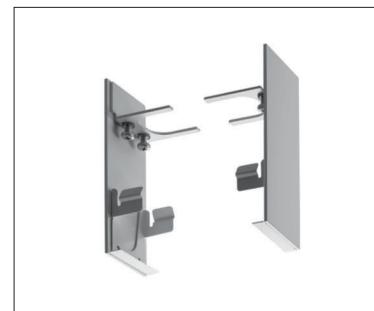


END CAP KIT FOR MODULES (SET OF 2)

#CAT	COLOR	QUANTITY
USC-MALEC	—	

Color	B = Black S = Silver W = White
-------	---

Allows capping of the ends of linear module runs. Color-matched to body.



LINEAR JOINER FOR SURFACE MOUNT MODULES

#CAT	QUANTITY
USC-MALLJ	

Allows mechanical connection of 2 units in a linear configuration.



ALGORITMO LED SYSTEM - SURFACE MOUNT

Design Carlotta de Bevilacqua, Paola di Arianello

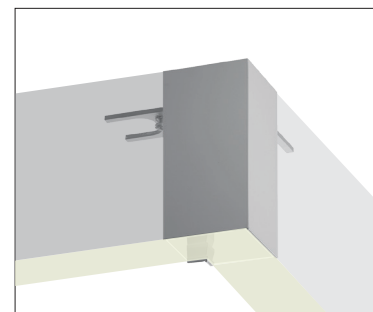
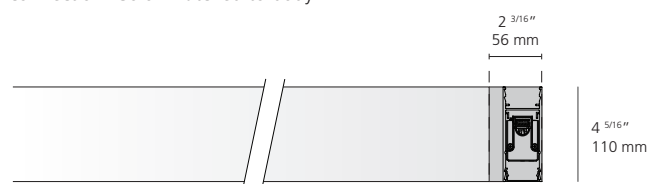
ACCESSORIES

HORIZONTAL L-JOINER FOR MODULES (IN DIFFUSED OPTICS ONLY)

#CAT	COLOR	QUANTITY
USC-MALC9HD	—	

Color	B = Black S = Silver W = White
-------	---

Allows 90 degree connection of 2 units on a horizontal plane. Included light-transmittive diffused corner optics; allows almost seamless module connection. Color-matched to body.



VERTICAL L-JOINER FOR MODULES (IN DIFFUSED OPTICS ONLY)

#CAT	COLOR	QUANTITY
USC-MALC9VD	—	

Color	B = Black S = Silver W = White
-------	---

Allows 90 degree connection of 2 units on a vertical plane. Vertical module must be surface mount (fixed to wall). Included light-transmittive diffused corner optics; allows almost seamless module connection.

