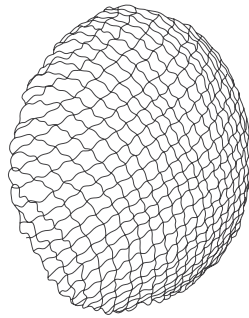


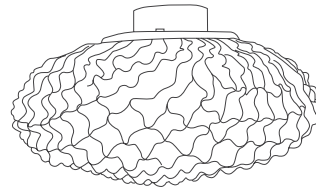
# a

## emotional light

tati collection



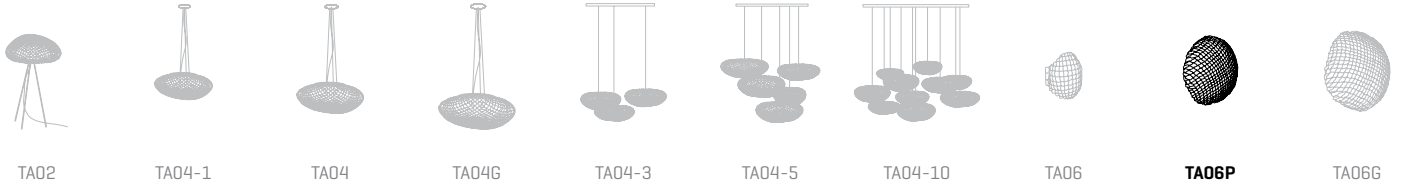
31cm | 12,2in



19cm | 7,5in

31cm | 12,2in

ref. TA06P



### MATERIALS & COMPONENTS | MATERIALES & COMPONENTES

#### LAMP SHADE | TULIPA

Painted stainless steel | One color to choose  
Acero inoxidable pintado | Un color a elegir



BL

BE

G

T

CUSTOM  
COLOR

Steel gloss nickel-plated and stainless steel  
Acero níquel-satinado y acero inoxidable

#### SUPPORT AND MOUNTING OPTIONS

##### SOPOORTE Y OPCIONES DE INSTALACIÓN

Steel gloss nickel-plated and stainless steel  
Acero níquel-satinado y acero inoxidable

Wall lamp  
Aplicque

#### RECOMMENDED BULBS

##### BOMBILLAS RECOMENDADAS

#### 230V - 50Hz

G9 LED - Max. 1x4 W

#### 120V - 60Hz

G9 LED - Max. 1x4 W

### OTHER DATA | OTROS DATOS

#### NET WEIGHT | PESO NETO

0,8kg | 1,8lb

#### PACKAGING | EMBALAJE

36x36x31cm | 14,2x 14,2x 12,2in

1kg | 2,2lb

#### ELECTRICAL FEATURES

##### CARACTERÍSTICAS ELÉCTRICAS



#### CERTIFICATIONS

##### CERTIFICACIONES



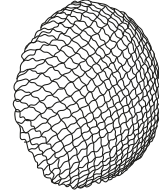
## Tati

ref. TA06P

Suitable for indoor use, at 25°C

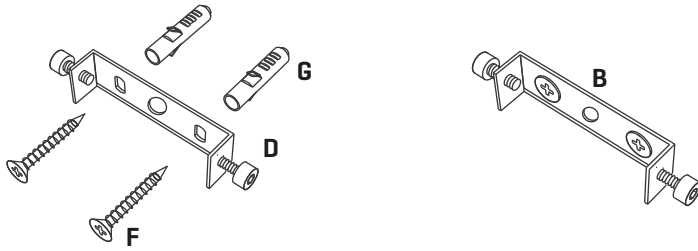
Apta para uso interior a temperatura ambiente de 25°C

Box contains | Contenido de la caja:

**A** - Lampshade | Tulipa [1]**B** - Holding piece | Pieza de sujeción [1]**C** - Security screws | Tornillos de seguridad [2]**E** - Electrical disposal | Ficha [1]**F** - Screws | Tornillos [2]**G** - Wall Plugs | Tacos [2]

Recommended bulbs : E14 LED Vintage - Max. 2x7 W | E14 LED Standard - Max. 2x7W

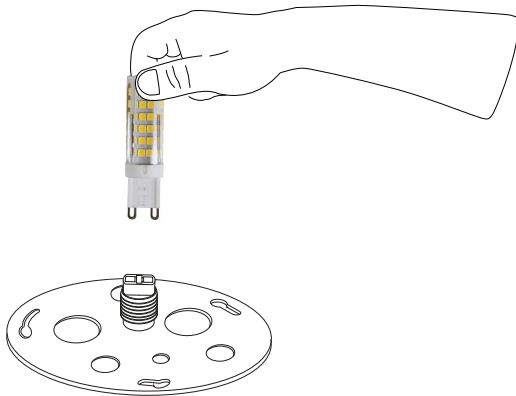
Bombillas recomendadas : E14 LED Vintage - Max 2x7 W | E14 LED Standard - Max 2x7 W



1

Drill the holes in the wall, fit the wall plugs into them and screw the holding piece.

Realizar los agujeros en la pared, colocar los tacos y atornillar la pieza de sujeción.



2

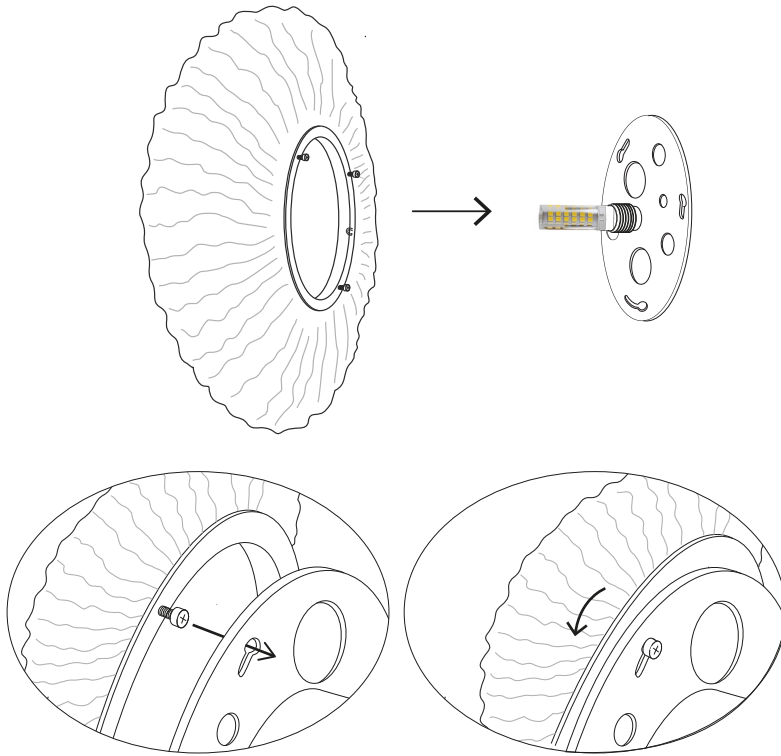
Place the bulb [not included] in its socket.

Colocar la bombilla [no incluida] en sus portalámparas.

# a

## emotional light

ASSEMBLY INSTRUCTIONS  
INSTRUCCIONES DE MONTAJE



### 3

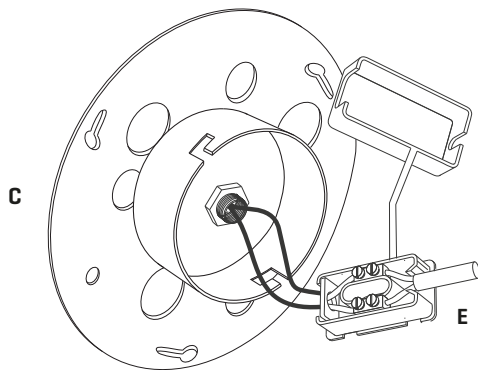
Fit the lampshade attachment screws in the bracket's keyholes. Rotate the lampshade until they stop. Tighten the set screws to secure the assembly.

Encajar los tornillos de enganche de la tulipa en las bocallaves del soporte. Gire la tulipa hasta que hagan tope. Apriete los tornillos de enganche para asegurar el conjunto.



The device is not suitable for installation on normally inflammable surfaces.

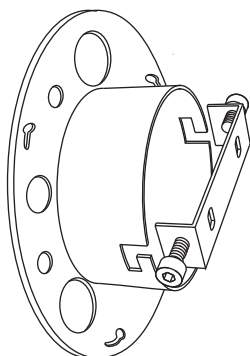
Aparato no adaptado para la instalación en superficies normalmente inflamables.



### 4

Pass the electric cables inside the metal support through the black protection tube, make the electrical connection in the box [E] and close it.

Pasar los cables eléctricos al interior del soporte metálico por el tubo negro de protección, hacer la conexión eléctrica en la ficha [E] y cerrarla.



### 5

Insert the canopy in the holding piece and tight the security screws.

Encajar el florón en la pieza de sujeción y apretar los tornillos de seguridad.