

DATASHEET

Type: **SFERA**
Name: Pendant light
ID: PC1168
Designed by: Lucie Koldová



Download

Description

A sphere as a universal shape, yet whose upper section has been dramatically severed. The clean cut comprises the main characteristic of the Sfera project light – a timeless piece that casts a soft light from within handblown matte opal glass.



Tech. description

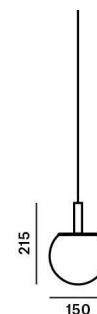
The light comprises a glass shade, metal body with Brokis connector and G9 socket, metal cap, and power cord with Brokis connector. The light is hung from a ceiling canopy.

Colours options: https://brokis.sharepoint.com/:b/s/brokis_sp/Ebllwm61jxZDqcz2RnysrFEBYVeaEFMRAL8yAfv4jxysKQ

CONSTRUCTION SPECIFICATION

Weight: 1 kg
Construction material: glass, metal
Cord length [mm]: 2,000 mm
Mounting: Ceiling
Environment: Indoor

DIMENSIONS [mm]



ELECTRICAL SPECIFICATION

Input voltage [V]: 230 V
Frequency [Hz]: 50-60 Hz
Max. power [W]: 30 W
Coverage IP: 20
Socket: G9
Light source: -
Energy class: A+ to E depending on light source

CERTIFICATIONS



BROKIS S.R.O.
ŠPANILOVA 1315/25
163 00 PRAHA 6 - ŘEPY
CZECH REPUBLIC

ORG ID 64940799
VAT ID CZ64940799
C 42174 MĚSTSKÝ SOUD
V PRAZE

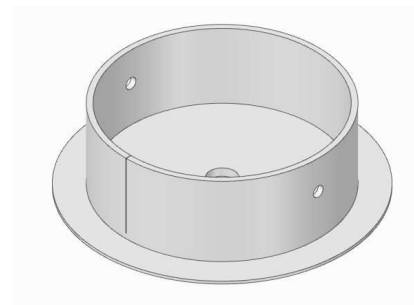
TEL +420 567 211 517
TECHNICAL@BROKIS.CZ
INFO@BROKIS.CZ
WWW.BROKIS.CZ

2020_10
PAGE 1

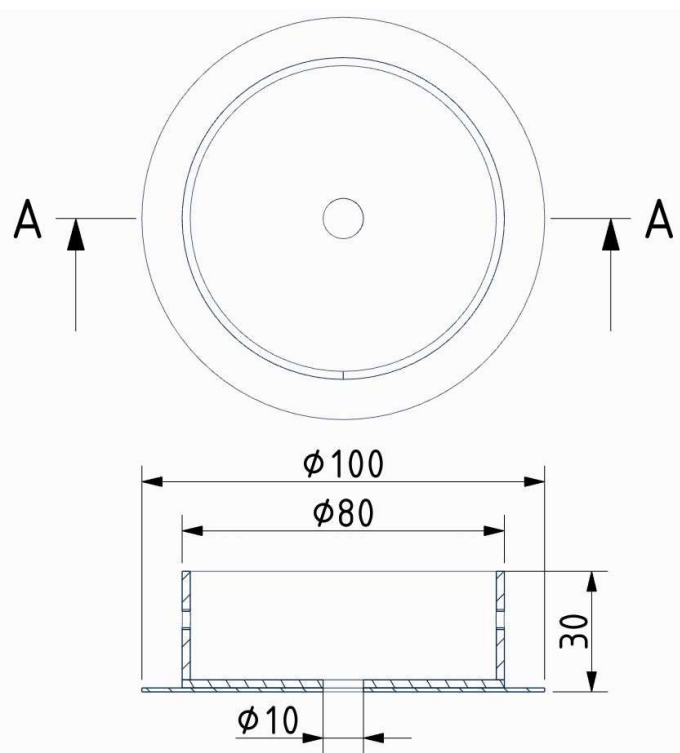


INNER FIXTURE

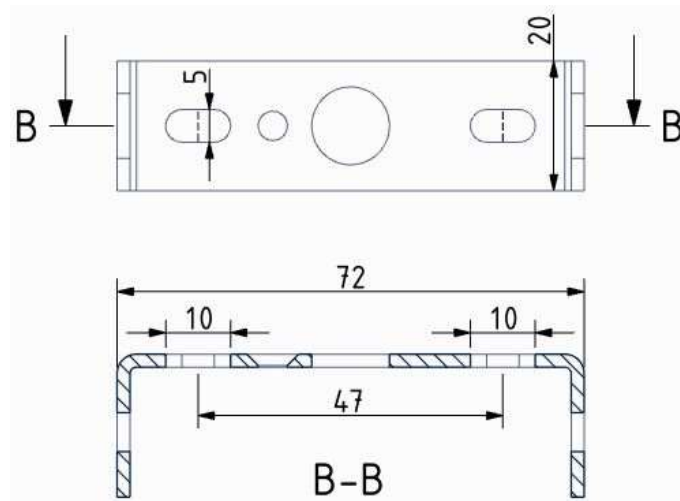
Dimensions O x w [mm] 100 x 30 mm
Weight [kg] 0,25 kg
Material metal



Drawing



Hole placement





Description

A sphere as a universal shape, yet whose upper section has been dramatically severed. The clean cut comprises the main characteristic of the Sfera project light – a timeless piece that casts a soft light from within handblown matte opal glass.



Tech. description

The light comprises a glass shade, metal body with Brokis connector and G9 socket, metal cap, and power cord with Brokis connector. The light is hung from a ceiling canopy.

Colours options: https://brokis.sharepoint.com/:b/s/brokis_sp/EZJJsDi_-sVPgVE0q3JbmFQBnZ-g575fZ0UV38cvg6T3sw

CONSTRUCTION SPECIFICATION

| | |
|-------------------------------|--------------|
| Weight: | 1,2 kg |
| Construction material: | glass, metal |
| Cord length [mm]: | 2,000 mm |
| Mounting: | Ceiling |
| Environment: | Indoor |

DIMENSIONS [mm]



ELECTRICAL SPECIFICATION

| | |
|---------------------------|-----------------------------------|
| Input voltage [V]: | 230 V |
| Frequency [Hz]: | 50-60 Hz |
| Max. power [W]: | 30 W |
| Coverage IP: | 20 |
| Socket: | G9 |
| Light source: | - |
| Energy class: | A+ to E depending on light source |

CERTIFICATIONS



DATASHEET

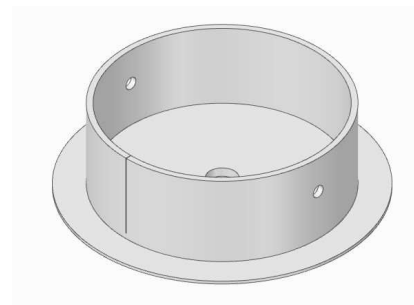
RECOMENDED CANOPY



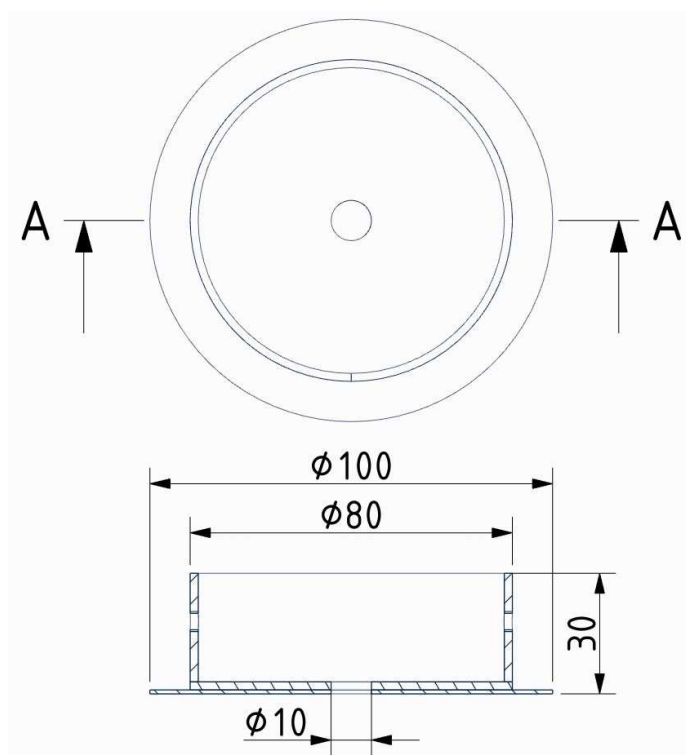
Download

CEILING CANOPY

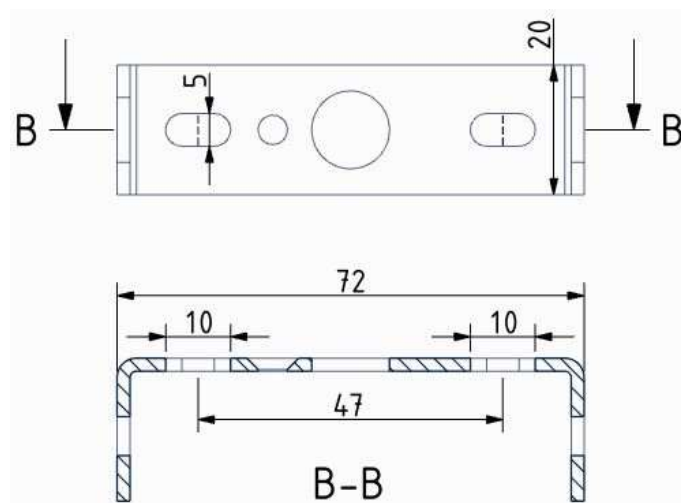
Dimensions $O \times w$ [mm] 100 x 30 mm
Weight [kg] 0,25 kg
Material metal



Drawing



Canopy bracket



BROKIS S.R.O.
ŠPANILOVA 1315/25
163 00 PRAHA 6 - ŘEPY
CZECH REPUBLIC

ORG ID 64940799
VAT ID CZ64940799
C 42174 MĚSTSKÝ SOUD
V PRAZE

TEL +420 567 211 517
TECHNICAL@BROKIS.CZ
INFO@BROKIS.CZ
WWW.BROKIS.CZ

2020_10
PAGE 2



Description

A sphere as a universal shape, yet whose upper section has been dramatically severed. The clean cut comprises the main characteristic of the Sfera project light – a timeless piece that casts a soft light from within handblown matte opal glass.



Tech. description

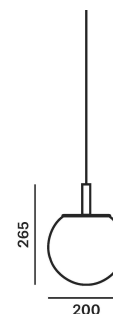
The light comprises a glass shade, metal body with Brokis connector and G9 socket, metal cap, and power cord with Brokis connector. The light is hung from a ceiling canopy.

Colours options: https://brokis.sharepoint.com/:b/s/brokis_sp/ER9BbtU48DBAjNXN6qAJxLYBs0-tGw5gjeWw5um0K3OZ4

CONSTRUCTION SPECIFICATION

| | |
|-------------------------------|--------------|
| Weight: | 1,5 kg |
| Construction material: | glass, metal |
| Cord length [mm]: | 2,000 mm |
| Mounting: | Ceiling |
| Environment: | Indoor |

DIMENSIONS [mm]



ELECTRICAL SPECIFICATION

| | |
|---------------------------|-----------------------------------|
| Input voltage [V]: | 230 V |
| Frequency [Hz]: | 50-60 Hz |
| Max. power [W]: | 30 W |
| Coverage IP: | 20 |
| Socket: | G9 |
| Light source: | - |
| Energy class: | A+ to E depending on light source |

CERTIFICATIONS



DATASHEET

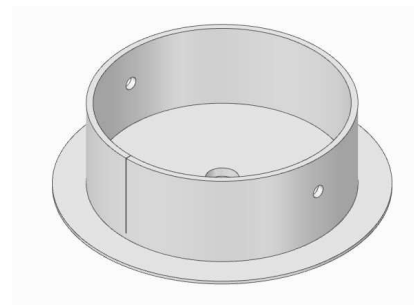
RECOMENDED CANOPY



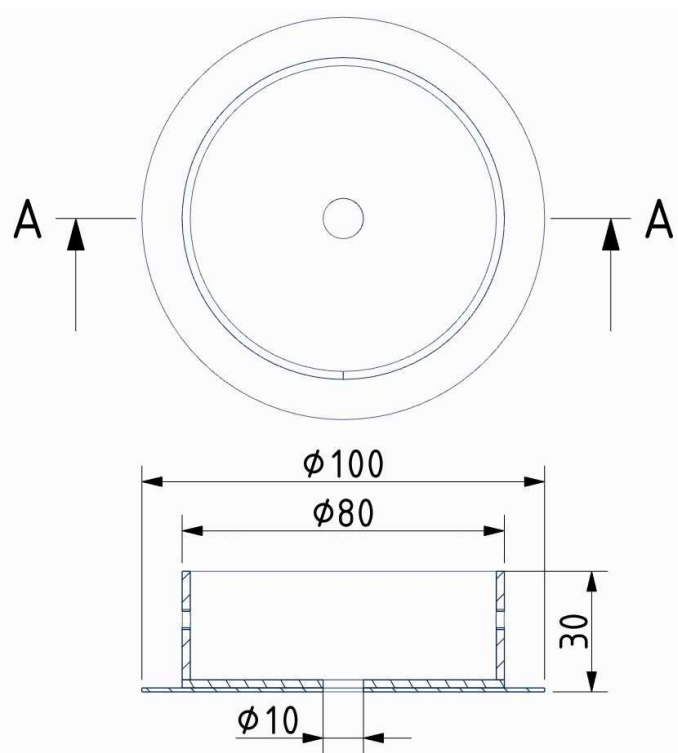
Download

CEILING CANOPY

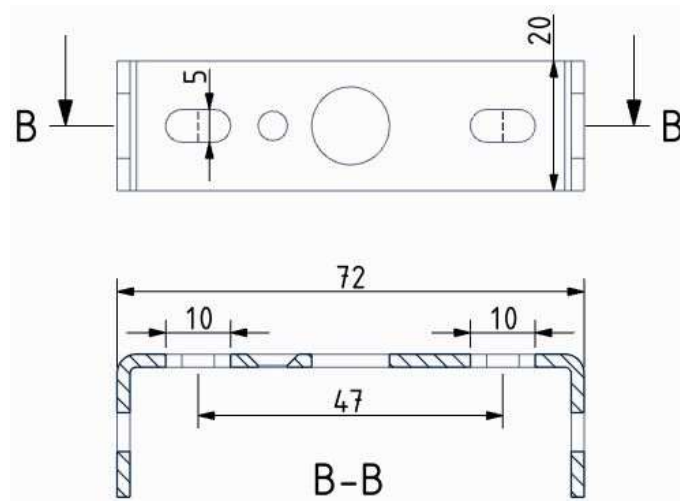
Dimensions $O \times w$ [mm] 100 x 30 mm
Weight [kg] 0,25 kg
Material metal



Drawing



Canopy bracket



BROKIS S.R.O.
ŠPANILOVA 1315/25
163 00 PRAHA 6 - ŘEPY
CZECH REPUBLIC

ORG ID 64940799
VAT ID CZ64940799
C 42174 MĚSTSKÝ SOUD
V PRAZE

TEL +420 567 211 517
TECHNICAL@BROKIS.CZ
INFO@BROKIS.CZ
WWW.BROKIS.CZ

2020_10
PAGE 2

DATASHEET

Type: **SFERA**
Name: Pendant light
ID: PC1169
Designed by: Lucie Koldová



Download

Description

A sphere as a universal shape, yet whose upper section has been dramatically severed. The clean cut comprises the main characteristic of the Sfera project light – a timeless piece that casts a soft light from within handblown matte opal glass.



Tech. description

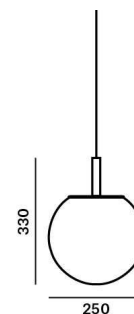
The light comprises a glass shade, metal body with Brokis connector and E27 socket, metal cap, and power cord with Brokis connector. The light is hung from a ceiling canopy.

Colours options: https://brokis.sharepoint.com/:b:/s/brokis_sp/EYZjwJp7HBdIIK4z5HRv3RcBiOIYaN7gBx7MiS4LbGujFw

CONSTRUCTION SPECIFICATION

Weight: 3.25 kg
Construction material: glass, metal
Cord length [mm]: 2,000 mm
Mounting: Ceiling
Environment: Indoor

DIMENSIONS [mm]



ELECTRICAL SPECIFICATION

Input voltage [V]: 230 V
Frequency [Hz]: 50-60 Hz
Max. power [W]: 60 W
Coverage IP: 20
Socket: E27
Light source: -
Energy class: A+ to E depending on light source

CERTIFICATIONS



BROKIS S.R.O.
ŠPANILOVA 1315/25
163 00 PRAHA 6 - ŘEPY
CZECH REPUBLIC

ORG ID 64940799
VAT ID CZ64940799
C 42174 MĚSTSKÝ SOUD
V PRAZE

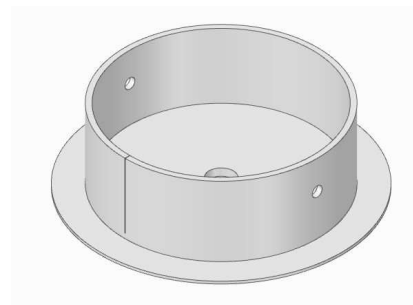
TEL +420 567 211 517
TECHNICAL@BROKIS.CZ
INFO@BROKIS.CZ
WWW.BROKIS.CZ

2020_09
PAGE 1

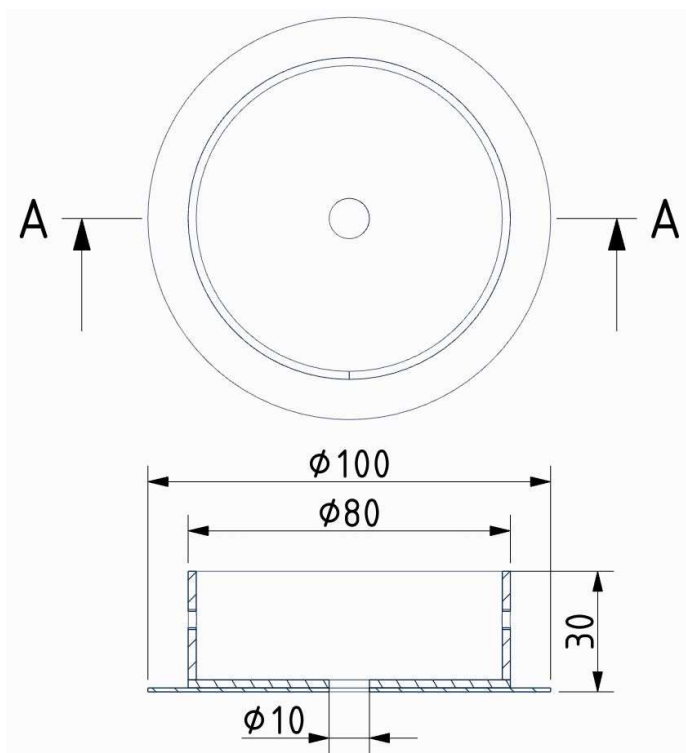


INNER FIXTURE

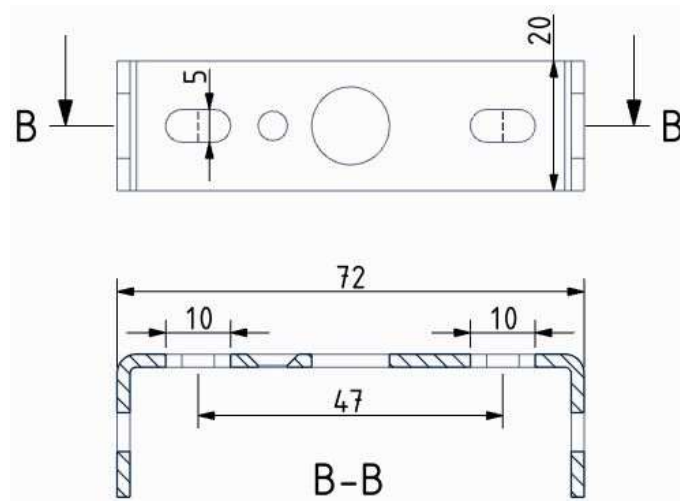
Dimensions O x w [mm] 100 x 30 mm
Weight [kg] 0,25 kg
Material metal



Drawing



Hole placement



DATASHEET

Type: **SFERA**
Name: Pendant light
ID: PC1170
Designed by: Lucie Koldová



Download

Description

A sphere as a universal shape, yet whose upper section has been dramatically severed. The clean cut comprises the main characteristic of the Sfera project light – a timeless piece that casts a soft light from within handblown matte opal glass.

Tech. description

The light comprises a glass shade, metal body with Brokis connector and E27 socket, metal cap, and power cord with Brokis connector. The light is hung from a ceiling canopy.

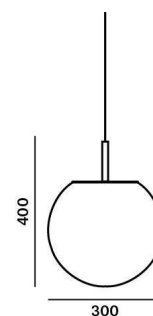


Colours options: https://brokis.sharepoint.com/:b/s/brokis_sp/Efx8k6rOfklJgVgKFYeoqkQBGzaGo6yy-ZSetgGnqsQ7jg

CONSTRUCTION SPECIFICATION

Weight: 4 kg
Construction material: glass, metal
Cord length [mm]: 2,000 mm
Mounting: Ceiling
Environment: Indoor

DIMENSIONS [mm]



ELECTRICAL SPECIFICATION

Input voltage [V]: 230 V
Frequency [Hz]: 50-60 Hz
Max. power [W]: 60 W
Coverage IP: 20
Socket: E27
Light source: -
Energy class: A+ to E depending on light source

CERTIFICATIONS



BROKIS S.R.O.
ŠPANILOVA 1315/25
163 00 PRAHA 6 - ŘEPY
CZECH REPUBLIC

ORG ID 64940799
VAT ID CZ64940799
C 42174 MĚSTSKÝ SOUD
V PRAZE

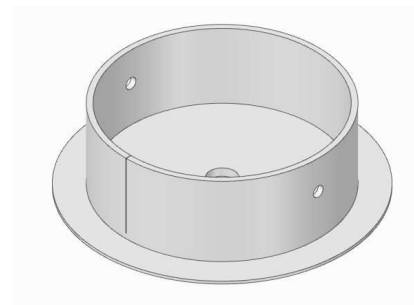
TEL +420 567 211 517
TECHNICAL@BROKIS.CZ
INFO@BROKIS.CZ
WWW.BROKIS.CZ

2020_09
PAGE 1

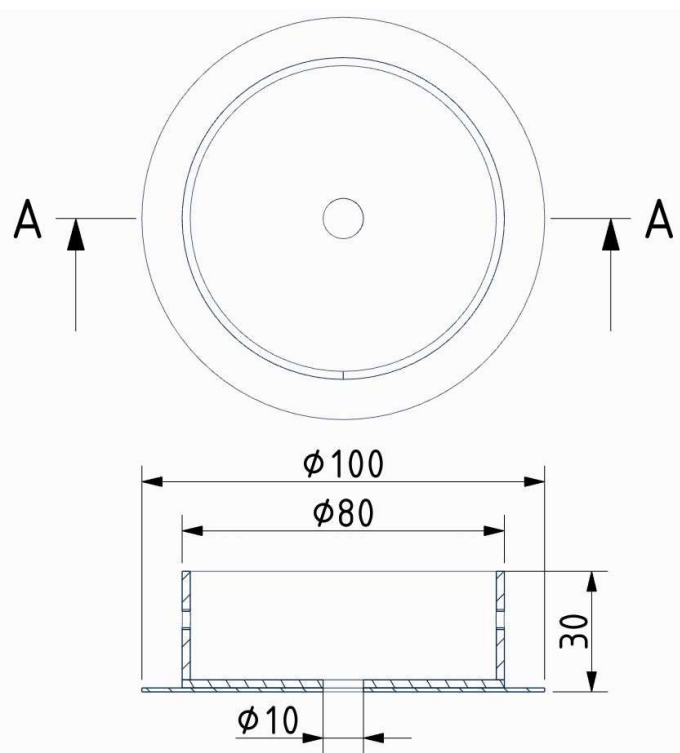


INNER FIXTURE

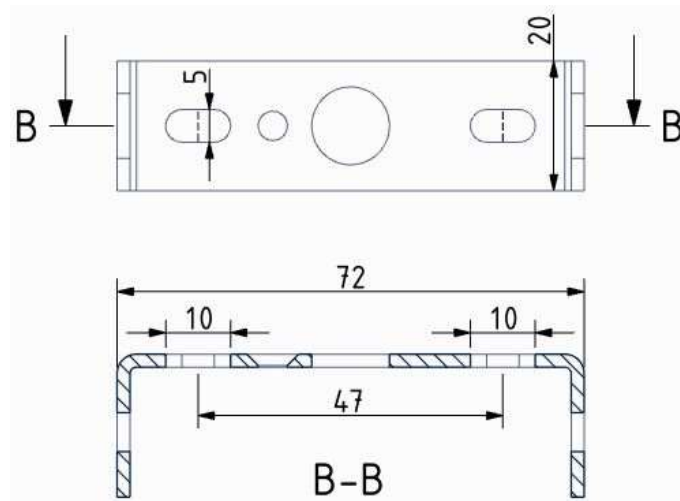
Dimensions O x w [mm] 100 x 30 mm
Weight [kg] 0,25 kg
Material metal



Drawing



Hole placement



DATASHEET

Type: **SFERA**
Name: Pendant light
ID: PC1171
Designed by: Lucie Koldová



Download

Description

A sphere as a universal shape, yet whose upper section has been dramatically severed. The clean cut comprises the main characteristic of the Sfera project light – a timeless piece that casts a soft light from within handblown matte opal glass.

Tech. description

The light comprises a glass shade, metal body with Brokis connector and E27 socket, metal cap, and power cord with Brokis connector. The light is hung from a ceiling canopy.

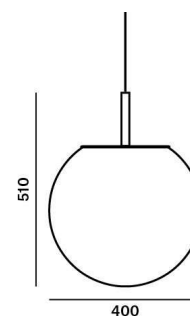


Colours options: https://brokis.sharepoint.com/:b:/s/brokis_sp/EaBdhyOROkpEjoPKVMdEWJUBrdYlo7s8YR_NPc0AiHRmYQ

CONSTRUCTION SPECIFICATION

Weight: 5 kg
Construction material: glass, metal
Cord length [mm]: 2,000 mm
Mounting: Ceiling
Environment: Indoor

DIMENSIONS [mm]



ELECTRICAL SPECIFICATION

Input voltage [V]: 230 V
Frequency [Hz]: 50-60 Hz
Max. power [W]: 60 W
Coverage IP: 20
Socket: E27
Light source: -
Energy class: A+ to E depending on light source

CERTIFICATIONS



BROKIS S.R.O.
ŠPANILOVA 1315/25
163 00 PRAHA 6 - ŘEPY
CZECH REPUBLIC

ORG ID 64940799
VAT ID CZ64940799
C 42174 MĚSTSKÝ SOUD
V PRAZE

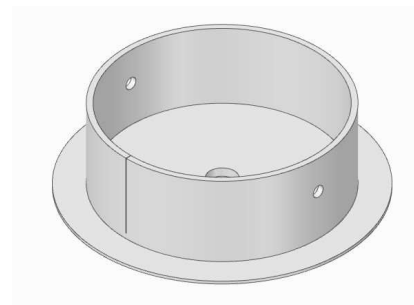
TEL +420 567 211 517
TECHNICAL@BROKIS.CZ
INFO@BROKIS.CZ
WWW.BROKIS.CZ

2020_09
PAGE 1

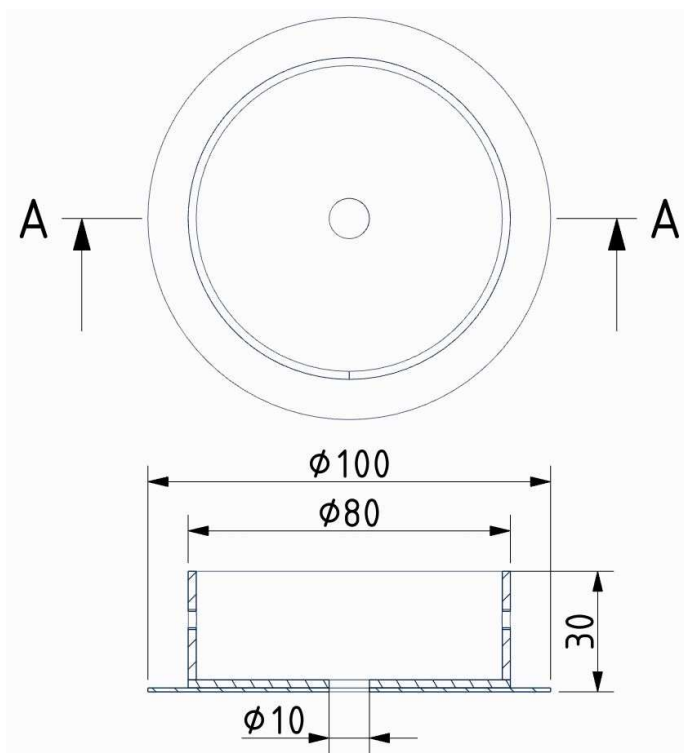


INNER FIXTURE

Dimensions O x w [mm] 100 x 30 mm
Weight [kg] 0,25 kg
Material metal



Drawing



Hole placement

