

SOUL STORY 1 OUTDOOR

de Charles Kalpakian

FICHE TECHNIQUE TECHNICAL SHEET



APPLIQUE

WALL LAMP

Matériau
Material

Béton
Concrete

Poids net
Net weight

4,34 kg

Emballage
Packaging

385 x 280 x 260 mm

IP
IP

64

Tension
Voltage

220-240V

Classe
Class

2

Watt
Watt

3,7W

Source
Source

LED intégrée 2700 K, gradable
Integrated LED 2700 K, dimmable

Lumens
Lumens output

250 lm
250 lm

Driver

Driver

Driver fourni intégré (48,2 x 30 x 20 mm)
Gradable TRIAC 180 mA / 13-21V
Integrated driver supplied (48,2 x 30 x 20 mm)
TRIAC dimmable 180 mA / 13-21V

Câble
Wire

NA

Interrupteur
Switch

NA

Fiches
Plug

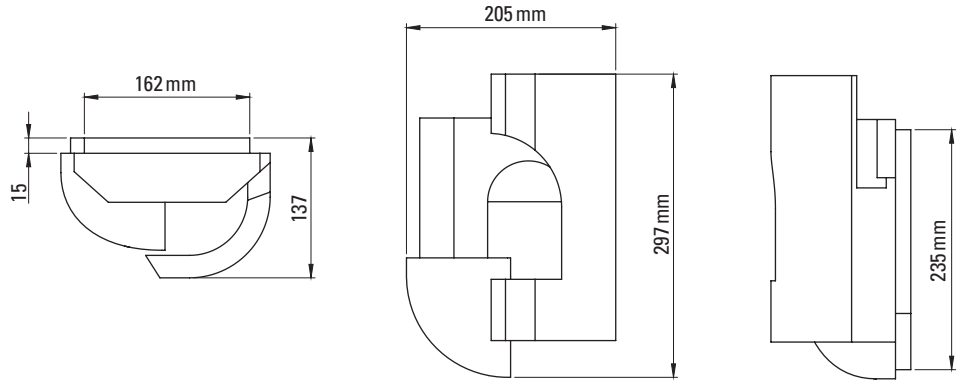
NA

FINITION FINISH



White

WH



SOUL STORY 2 OUTDOOR

de Charles Kalpakian

FICHE TECHNIQUE TECHNICAL SHEET



APPLIQUE

WALL LAMP

Matériau
Material

Béton
Concrete

Poids net
Net weight

4,30 kg

Emballage
Packaging

315 x 250 x 405 mm

IP
IP

64

Tension
Voltage

220-240V

Classe
Class

2

Watt
Watt

3,7W

Source
Source

LED intégrée 2700 K, gradable
Integrated LED 2700 K, dimmable

Lumens
Lumens output

250 lm
250 lm

Driver

Driver

Driver fourni intégré (48,2 x 30 x 20 mm)
Gradable TRIAC 180 mA / 13-21V
Integrated driver supplied (48,2 x 30 x 20 mm)
TRIAC dimmable 180 mA / 13-21V

Câble
Wire

NA

Interrupteur
Switch

NA

Fiches
Plug

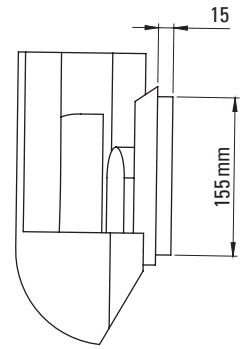
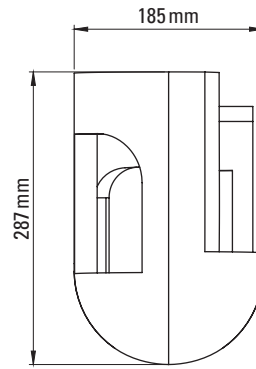
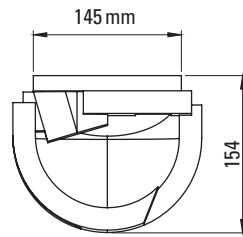
NA

FINITION FINISH



White

WH



SOUL STORY 3 OUTDOOR

de Charles Kalpakian

FICHE TECHNIQUE TECHNICAL SHEET



APPLIQUE

WALL LAMP

Matériau
Material

Béton
Concrete

Poids net
Net weight

3,82 kg

Emballage
Packaging

410 x 305 x 275 mm

IP
IP

64

Tension
Voltage

220-240V

Classe
Class

2

Watt
Watt

3,7W

Source
Source

LED intégrée 2700 K, gradable
Integrated LED 2700 K, dimmable

Lumens
Lumens output

250 lm
250 lm

Driver

Driver

Driver fourni intégré (48,2 x 30 x 20 mm)
Gradable TRIAC 180 mA / 13-21V
Integrated driver supplied (48,2 x 30 x 20 mm)
TRIAC dimmable 180 mA / 13-21V

Câble
Wire

NA

Interrupteur
Switch

NA

Fiches
Plug

NA

FINITION FINISH



White

WH