

Roest /roōst/ 45v Pendant



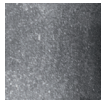
Color



Rust
GP2002-N




Rust/Zinc
GP2002-Z



Zinc
GP2002-AZ



Carbon
GP2002-C

	North America	Europe
Bulb	Max 10W LED, GU10, 120V	Max 10W LED, GU10, 220-240V
Color temperature	2700K (recommended)	2700K (recommended)
Lumen output	Dependent on bulb	Dependent on bulb
Cord	Black, 6.5ft (16ft available)	Black fabric, 2m (5m available)
Canopy	Black powder coated, Ø 5, H 1 (in)	Black powder coated, Ø 10, H 2.5 (cm)
Material	Naturally rusted steel	Naturally rusted steel
	Naturally rusted & zinc coated steel	Naturally rusted & zinc coated steel
	Zinc coated steel	Zinc coated steel
	Black coated steel	Black coated steel
Size	Ø 2.375, H 17.75 (in)	Ø 6, H 45 (cm)
Weight	4.6lbs	2.1kg
Country of origin	The Netherlands	The Netherlands
Certification		

For use in dry location. After the natural oxidation process, all items are treated to stop further rusting. The material will not come off of stain.

**Designed by VanJoost,
The Netherlands.**

Custom cords and canopies are available. Contact our offices for more information.