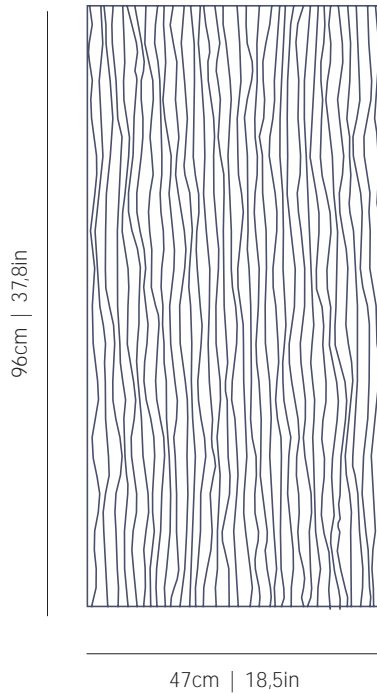


a

by arturo alvarez

planum collection

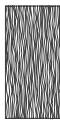


LED

ref. PM06PR-LD



PM06R

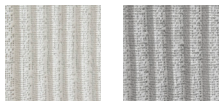


PM06PR

MATERIALS & COMPONENTS | MATERIALES & COMPONENTES

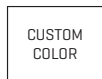
LAMP SHADE | TULIPA

Painted stainless steel | One color to choose
Acero inoxidable pintado | Un color a elegir



BL

G



Steel gloss nickel-plated and stainless steel
Acero níquel-satinado y acero inoxidable

SUPPORT | SOPORTE

Stainless steel
Acero inoxidable

MOUNTING OPTIONS

OPCIONES DE INSTALACIÓN

Wall & ceiling lamp
Aplique & plafón

LIGHT SOURCE BUILT IN

FUENTE DE LUZ INCLUIDA

230V - 50Hz

□ □ □ □ 24W 3000K 3780lm built-in
upon request 2700K 3636lm

Dimming system: DALI / Switch DIM
upon request PHASE CUT

100-277V - 60Hz

□ □ □ □ 24W 3000K 3780lm built-in
upon request 2700K 3636lm

Dimming system: 0-10V
upon request PHASE CONTROL (only 120V)

ENERGY EFFICIENCY

EFICIENCIA ENERGÉTICA

A++

OTHER DATA | OTROS DATOS

NET WEIGHT | PESO NETO

2,8kg | 6,2lb

PACKAGING | EMBALAJE

100x53x15cm | 39,4x20,9x5,9in
5kg | 11lb

ELECTRICAL FEATURES

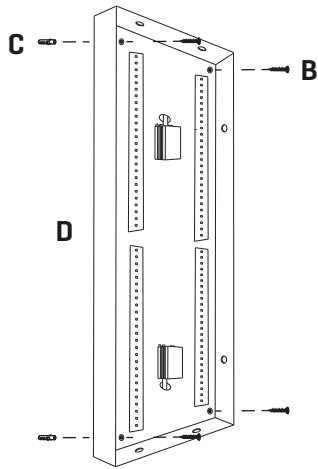
CARACTERÍSTICAS ELÉCTRICAS



CERTIFICATIONS

CERTIFICACIONES

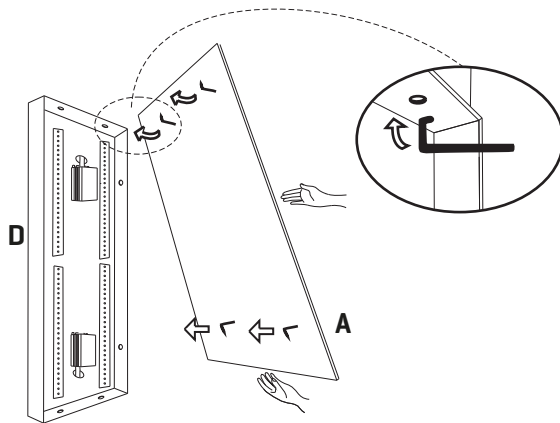




2

Drill the holes in the wall, fit the wall plugs into the holes and screw the support.

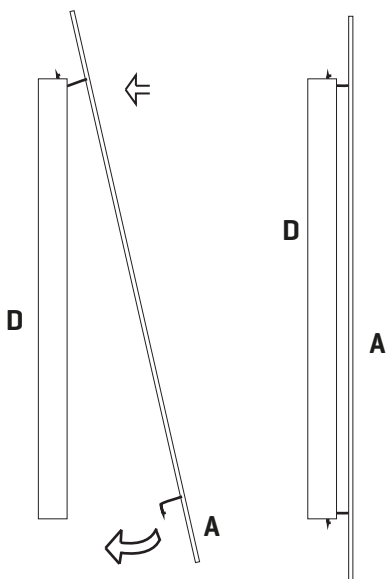
Realizar los agujeros en la pared, colocar los tacos y atornillar el soporte.



3

Join the lampshade in the support fitting the lampshade hooks into the holes of the support.

Unir la tulipa en el soporte encajando los ganchos de la tulipa en los agujeros laterales del soporte.



4

NOTE: For the correct lampshade coupling, put the two outermost hooks first and then the following ones, as shown in the picture.

The lampshade can be positioned either horizontally or vertically.

NOTA: Para el correcto enganche de la tulipa, colocar primero los dos ganchos más alejados y luego los siguientes, tal y como se muestra en el dibujo.

La tulipa se puede posicionar tanto horizontal como verticalmente.