

DATASHEET

Type: **MONA MEDIUM**
Name: Floor light
ID: PC980
Designed by: Lucie Koldová



Download

Description

The collection is a showcase of original design and refined combinations of materials, such as glass, metal, and leather. It features a tubular LED light source with a range of colour temperatures to choose from.

Tech. description

The light comprises a glass shade, metal body, and tubular LED light source with triplex opal glass diffusor. The LED light source and glass shade assembly is secured with wooden endcaps and attached to the body of the light with a connector. The electronics are housed in the base.

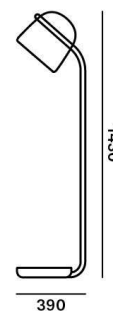


Colours options: https://brokis.sharepoint.com/:b/s/brokis_sp/Eee5g9kJb95DjTDulrT5DAkBrZvunpUIJRIHtk11DX17Q

CONSTRUCTION SPECIFICATION

Weight: 10 kg
Construction material: glass, metal, wood
Cord length [mm]: 2,200 mm
Mounting: Floor
Environment: Indoor

DIMENSIONS [mm]



ELECTRICAL SPECIFICATION

Input voltage [V]: 100 - 240 V
Frequency [Hz]: 50-60 Hz
Max. power [W]: 7.7 W
Coverage IP: 20
Socket: non-user replaceable LED module
Light source: -
Energy class: E

CERTIFICATIONS



BROKIS S.R.O.
ŠPANILOVA 1315/25
163 00 PRAHA 6 - ŘEPY
CZECH REPUBLIC

ORG ID 64940799
VAT ID CZ64940799
C 42174 MĚSTSKÝ SOUD
V PRAZE

TEL +420 567 211 517
TECHNICAL@BROKIS.CZ
INFO@BROKIS.CZ
WWW.BROKIS.CZ

2022_07
PAGE 1

DATASHEET

RECOMMENDED BULBS

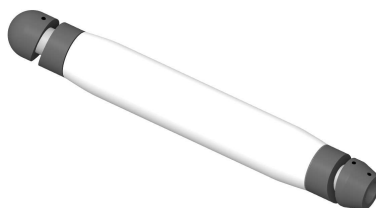


Download



CP12411

Type	LED module
Lamp wattage [W]	7,7 W
Input voltage [V]	24 VDC
Energy class	E
Flux [lm]	327 lm
Light colour [K]	2700 K
CRI	90+
Lifespan [h]	20000h
Dimmable	yes (PWM)



CP12412

Type	LED module
Lamp wattage [W]	7,7 W
Input voltage [V]	24 VDC
Energy class	E
Flux [lm]	360 lm
Light colour [K]	4000 K
CRI	90+
Lifespan [h]	20000h
Dimmable	yes (PWM)



CP12413

Type	LED module
Lamp wattage [W]	7,7 W
Input voltage [V]	24 VDC
Energy class	E
Flux [lm]	387 lm
Light colour [K]	5000 K
CRI	90+
Lifespan [h]	20000h
Dimmable	yes (PWM)

DATASHEET

Type: **MONA LARGE**
Name: Floor light
ID: PC949
Designed by: Lucie Koldová



Download

Description

The collection is a showcase of original design and refined combinations of materials, such as glass, metal, and leather. It features a tubular LED light source with a range of colour temperatures to choose from.

Tech. description

The light comprises a glass shade, metal body, and tubular LED light source with triplex opal glass diffusor. The LED light source and glass shade assembly is secured with wooden endcaps and attached to the body of the light with a connector. The electronics are housed in the base.

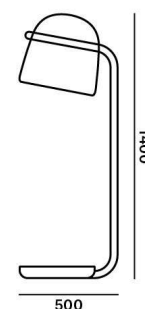


Colours options: https://brokis.sharepoint.com/:b:/s/brokis_sp/EY0oD58Oy9hLpN-cjiwzMOIBgoilWVt9oQ3Iz-Ywvq_Y1A

CONSTRUCTION SPECIFICATION

Weight: 12 kg
Construction material: glass, metal, wood
Cord length [mm]: 2,200 mm
Mounting: Floor
Environment: Indoor

DIMENSIONS [mm]



ELECTRICAL SPECIFICATION

Input voltage [V]: 100 - 240 V
Frequency [Hz]: 50-60 Hz
Max. power [W]: 13 W
Coverage IP: 20
Socket: non-user replaceable LED module
Light source: -
Energy class: E

CERTIFICATIONS



BROKIS S.R.O.
ŠPANILOVA 1315/25
163 00 PRAHA 6 - ŘEPY
CZECH REPUBLIC

ORG ID 64940799
VAT ID CZ64940799
C 42174 MĚSTSKÝ SOUD
V PRAZE

TEL +420 567 211 517
TECHNICAL@BROKIS.CZ
INFO@BROKIS.CZ
WWW.BROKIS.CZ

2022_07
PAGE 1

DATASHEET

RECOMMENDED BULBS

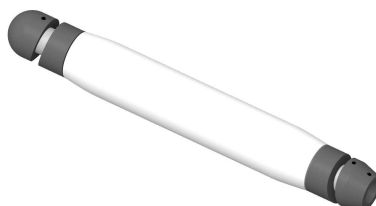


Download



CP14586

Type	LED module
Lamp wattage [W]	13 W
Input voltage [V]	24 VDC
Energy class	E
Flux [lm]	552 lm
Light colour [K]	2700 K
CRI	90+
Lifespan [h]	20000h
Dimmable	yes (PWM)



CP14587

Type	LED module
Lamp wattage [W]	13 W
Input voltage [V]	24 VDC
Energy class	E
Flux [lm]	610 lm
Light colour [K]	4000 K
CRI	90+
Lifespan [h]	20000h
Dimmable	yes (PWM)



CP14588

Type	LED module
Lamp wattage [W]	13 W
Input voltage [V]	24 VDC
Energy class	E
Flux [lm]	654 lm
Light colour [K]	5000 K
CRI	90+
Lifespan [h]	20000h
Dimmable	yes (PWM)