

DATASHEET

Type: **MONA SMALL**
Name: Wall light
ID: PC969
Designed by: Lucie Koldová



Download

Description

The collection is a showcase of original design and refined combinations of materials, such as glass, metal, and wood. It features a tubular LED light source with a range of colour temperatures to choose from.

Tech. description

The light comprises a glass shade, metal body, and tubular LED light source with triplex opal glass diffusor. The glass shade and LED light source assembly are secured with wooden endcaps. The electronics are housed in the body of the light.

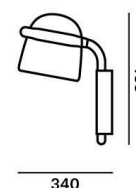


Colours options: https://brokis.sharepoint.com/:b/s/brokis_sp/EToyQI0MZgtDqfCMyhJtTUsBqoFvOI1d9-R5J2SVtx-PJw

CONSTRUCTION SPECIFICATION

Weight (kg)	3 kg
Construction material	glass, wood, metal
Cord length (mm)	-
Mounting	Wall
Environment	Indoor

DIMENSIONS [mm]



ELECTRICAL SPECIFICATION

Input voltage (V)	100-240 V
Frequency (Hz)	50-60 Hz
Max. power (W)	2.5 W
Coverage IP	20
Socket	-
Light source	non-user replaceable LED module
Energy class	E

CERTIFICATIONS



BROKIS S.R.O.
ŠPANILOVA 1315/25
163 00 PRAHA 6 - ŘEPY
CZECH REPUBLIC

ORG ID 64940799
VAT ID CZ64940799
C 42174 MĚSTSKÝ SOUD
V PRAZE

TEL +420 567 211 517
TECHNICAL@BROKIS.CZ
INFO@BROKIS.CZ
WWW.BROKIS.CZ

2022_07
PAGE 1



CP14560

Type	LED module
Lamp wattage [W]	2,5 W
Input voltage [V]	24 VDC
Energy class	E
Flux [lm]	106 lm
Light colour [K]	2700 K
CRI	90+
Lifespan [h]	20000h
Dimmable	yes (PWM)



CP14562

Type	LED module
Lamp wattage [W]	2,5 W
Input voltage [V]	24 VDC
Energy class	E
Flux [lm]	117 lm
Light colour [K]	4000 K
CRI	90+
Lifespan [h]	20000h
Dimmable	yes (PWM)



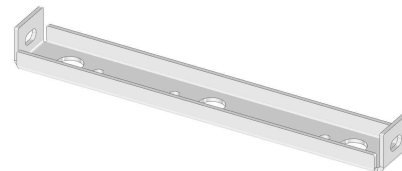
CP14564

Type	LED module
Lamp wattage [W]	2,5 W
Input voltage [V]	24 VDC
Energy class	E
Flux [lm]	125 lm
Light colour [K]	5000 K
CRI	90+
Lifespan [h]	20000h
Dimmable	yes (PWM)



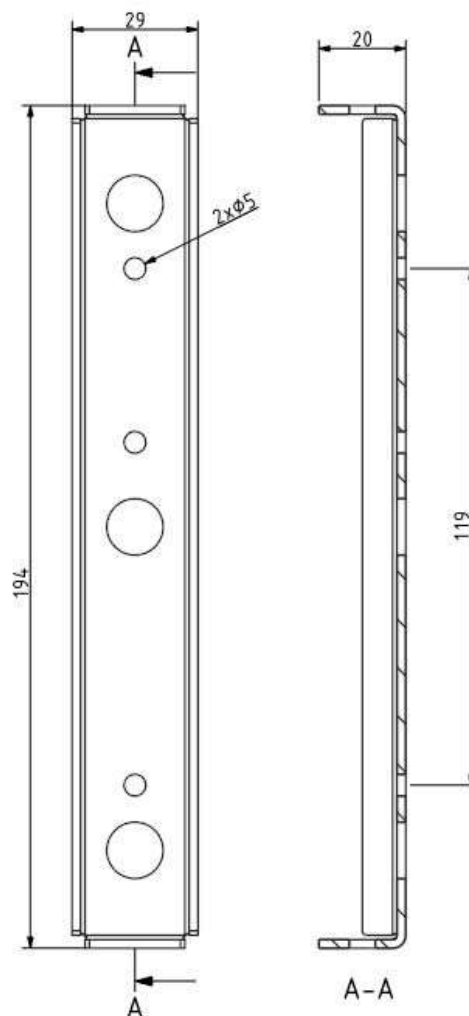
INNER FIXTURE

Dimensions w x h [mm]	194 x 29 mm
Weight [kg]	0.7 kg
Material	metal



Drawing

Hole placement



DATASHEET

Type: **MONA MEDIUM**
Name: Wall light
ID: PC970
Designed by: Lucie Koldová



Download

Description

The collection is a showcase of original design and refined combinations of materials, such as glass, metal, and wood. It features a tubular LED light source with a range of colour temperatures to choose from.

Tech. description

The light comprises a glass shade, metal body, and tubular LED light source with triplex opal glass diffusor. The glass shade and LED light source assembly are secured with wooden endcaps. The electronics are housed in the body of the light.

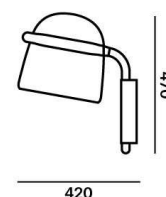


Colours options: https://brokis.sharepoint.com/:b:/s/brokis_sp/EQN5R9v6XndLnkGQy-7RsGABHJmIQbYaftd_Wd8KOtg9dQ

CONSTRUCTION SPECIFICATION

Weight (kg)	4 kg
Construction material	glass, wood, metal
Cord length (mm)	-
Mounting	Wall
Environment	Indoor

DIMENSIONS [mm]



ELECTRICAL SPECIFICATION

Input voltage (V)	100-240 V
Frequency (Hz)	50-60 Hz
Max. power (W)	7.7 W
Coverage IP	20
Socket	-
Light source	non-user replaceable LED module
Energy class	E

CERTIFICATIONS

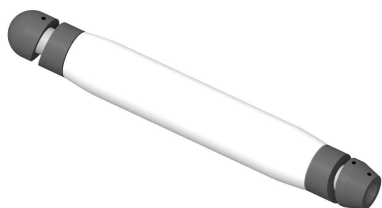


BROKIS S.R.O.
ŠPANILOVA 1315/25
163 00 PRAHA 6 - ŘEPY
CZECH REPUBLIC

ORG ID 64940799
VAT ID CZ64940799
C 42174 MĚSTSKÝ SOUD
V PRAZE

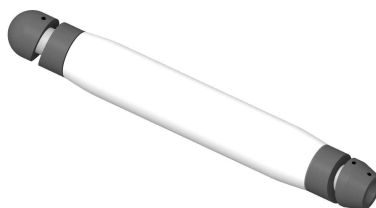
TEL +420 567 211 517
TECHNICAL@BROKIS.CZ
INFO@BROKIS.CZ
WWW.BROKIS.CZ

2022_07
PAGE 1



CP12411

Type	LED module
Lamp wattage [W]	7,7 W
Input voltage [V]	24 VDC
Energy class	E
Flux [lm]	327 lm
Light colour [K]	2700 K
CRI	90+
Lifespan [h]	20000h
Dimmable	yes (PWM)



CP12412

Type	LED module
Lamp wattage [W]	7,7 W
Input voltage [V]	24 VDC
Energy class	E
Flux [lm]	360 lm
Light colour [K]	4000 K
CRI	90+
Lifespan [h]	20000h
Dimmable	yes (PWM)



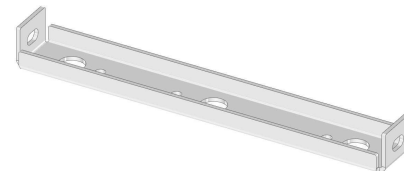
CP12413

Type	LED module
Lamp wattage [W]	7,7 W
Input voltage [V]	24 VDC
Energy class	E
Flux [lm]	387 lm
Light colour [K]	5000 K
CRI	90+
Lifespan [h]	20000h
Dimmable	yes (PWM)



INNER FIXTURE

Dimensions w x h [mm]	194 x 29 mm
Weight [kg]	0.7 kg
Material	metal



Drawing

Hole placement

