

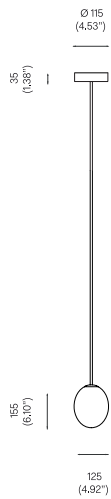


THE PHILOSOPHICAL EGG
PENDANT, 2019

Polished Brass
Mouth blown opaline glass.
Pendant rod length to order.

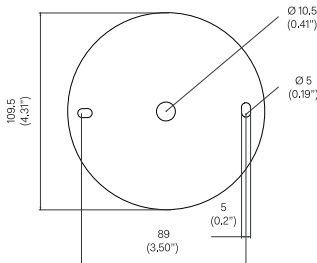


OVERALL DIMENSIONS



BACKPLATE DIMENSIONS

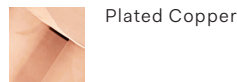
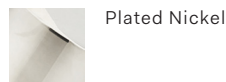
Mounting screws not included.
5mm countersunk screw recommended.



STANDARD MATERIAL/FINISH



CUSTOM FINISHES



BULB SPECIFICATIONS

G9 3.5W LED Bulb
330lm / 2700K

PRODUCT SPECIFICATIONS

Input voltage: 120V / 240V
Maximum wattage: 40W
120V / 240V dimmable LED triac
Product weight: 3kg
IP20

Please supply required drop length of fixture,
measured from the ceiling to bottom fitting at
time of order.

Minimum total drop length 300mm.
Maximum total drop length 2150mm.

Please allow 25mm tolerance of drop length.

CLEANING INSTRUCTIONS

Before cleaning, lighting fixtures must
be turned off and unplugged from mains
electricity. Whilst cleaning please take care
and use the gloves provided.

Polished Brass: As the item is unlacquered
it will naturally oxidise and darken. Upon
touching the items without gloves, fingerprints
are likely to occur and leave marks. Use
a good quality brass cleaning liquid and
follow the product instructions using the
extra soft dust cloth. Do not apply pressure
on persistent marks. Remove them using
repeated gentle motions and by reapplying
the brass cleaning liquid.

Plated Finish: Use a lightly damp soft dust
cloth and gently go over marks until clean.
Dry it afterwards with a soft dust cloth.

Patinated Finish: Use a dry soft dust cloth
and gently go over marks until clean. The
brass patina is achieved through an artisanal
technique of applying pigments by hand
during a hot patination process. Through this
alchemic process, the brass is transformed
whilst retaining the material's inherent
qualities. It will mature and change overtime.
The manner and speed in which it will change
will depend on the environment, handling
and the level and frequency of maintenance.
Verdigris can also appear when the copper in
the brass begins to oxidise.

Opaline Glass: Remove the opaline glass from
the product. Using a lightly damp cloth, clean
only the outside of the sphere. Only put the
glass sphere back on the product once it is
fully dry.