

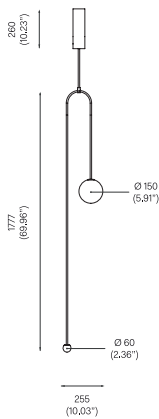


MOBILE CHANDELIER 7, 2015

Black Patinated Brass
 Mouth blown opaline spheres
 Pendant rod length to order.

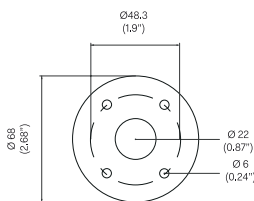


OVERALL DIMENSIONS

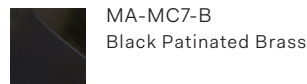


BACKPLATE DIMENSIONS

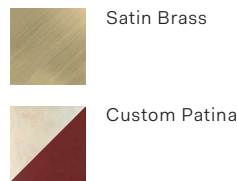
Mounting screws not included.
 6mm countersunk screw recommended.



STANDARD MATERIAL/FINISH



CUSTOM FINISHES



BULB SPECIFICATIONS

Integrated LED, 9W for Ø150mm sphere
 800lm / 2700K

Integrated LED, 3W for Ø60mm sphere
 350lm / 2700K

PRODUCT SPECIFICATIONS

Maximum wattage: 13W
 120V / 240V dimmable 0~10Vdc or 10V PWM
 signal or resistance.
 Product weight: 15kg
 IP20

Please supply required drop length of fixture,
 measured from the ceiling to bottom of fitting
 at time of order.

Minimum total drop length 2087mm.
 Maximum total drop length 4034mm.
 Maximum total drop length with extension
 6053mm.

Please allow 25mm tolerance of drop length.

120V version supplied with paintable junction
 box cover.

Due to the handmade nature of this product
 dimensions may vary up to 10% for balancing
 purposes.

CLEANING INSTRUCTIONS

Before cleaning, lighting fixtures must
 be turned off and unplugged from mains
 electricity. Whilst cleaning please take care
 and use the gloves provided.

Patinated Finish: Use a dry soft dust cloth
 and gently go over marks until clean. The
 brass patina is achieved through an artisanal
 technique of applying pigments by hand
 during a hot patination process. Through this
 alchemic process, the brass is transformed
 whilst retaining the material's inherent
 qualities. It will mature and change overtime.
 The manner and speed in which it will change
 will depend on the environment, handling
 and the level and frequency of maintenance.
 Verdigris can also appear when the copper in
 the brass begins to oxidise.

Satin Brass: As the item is unlacquered it will
 naturally oxidise and darken. Upon touching
 the items without gloves, fingerprints are likely
 to occur and leave marks. Use a good quality
 brass cleaning liquid and follow the product
 instructions using the extra soft dust cloth.
 Do not apply pressure on persistent marks.
 Remove them using repeated gentle motions
 and by reapplying the brass cleaning liquid.

Opaline Glass: Remove the opaline glass from
 the product. Using a lightly damp cloth, clean
 only the outside of the sphere. Only put the
 glass sphere back on the product once it is
 fully dry.