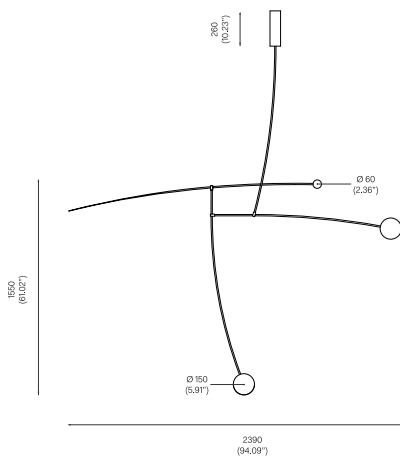


MOBILE CHANDELIER 14, 2019

Black Patinated Brass  
 Mouth blown opaline spheres  
 Pendant rod length to order.

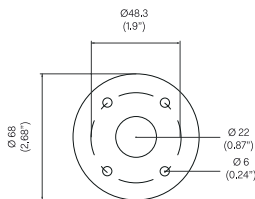


OVERALL DIMENSIONS

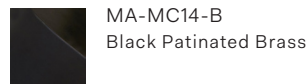


BACKPLATE DIMENSIONS

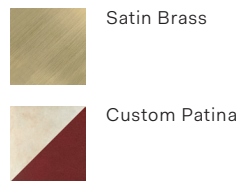
Mounting screws not included.  
 6mm countersunk screw recommended.



STANDARD MATERIAL/FINISH



CUSTOM FINISHES



BULB SPECIFICATIONS

Integrated LED, 9W for Ø 150mm sphere  
 800lm / 2700K

Integrated LED, 3W for Ø 60mm sphere  
 350lm / 2700K

PRODUCT SPECIFICATIONS

Maximum wattage: 22W  
 120V / 240V dimmable 0~10Vdc or 10V PWM  
 signal or resistance.  
 Product weight: 15kg  
 IP20

Please supply required drop length of fixture,  
 measured from the ceiling to bottom of fitting  
 at time of order.

Minimum total drop length 2752mm.  
 Maximum total drop length 3562mm.  
 Maximum total drop length with extension  
 5582mm.

Please allow 25mm tolerance of drop length.

120V version supplied with paintable junction  
 box cover.

Due to the handmade nature of this product  
 dimensions may vary up to 10% for balancing  
 purposes.

CLEANING INSTRUCTIONS

Before cleaning, lighting fixtures must  
 be turned off and unplugged from mains  
 electricity. Whilst cleaning please take care  
 and use the gloves provided.

Patinated Finish: Use a dry soft dust cloth  
 and gently go over marks until clean. The  
 brass patina is achieved through an artisanal  
 technique of applying pigments by hand  
 during a hot patination process. Through this  
 alchemic process, the brass is transformed  
 whilst retaining the material's inherent  
 qualities. It will mature and change overtime.  
 The manner and speed in which it will change  
 will depend on the environment, handling  
 and the level and frequency of maintenance.  
 Verdigris can also appear when the copper in  
 the brass begins to oxidise.

Satin Brass: As the item is unlacquered it will  
 naturally oxidise and darken. Upon touching  
 the items without gloves, fingerprints are likely  
 to occur and leave marks. Use a good quality  
 brass cleaning liquid and follow the product  
 instructions using the extra soft dust cloth.  
 Do not apply pressure on persistent marks.  
 Remove them using repeated gentle motions  
 and by reapplying the brass cleaning liquid.

Opaline Glass: Remove the opaline glass from  
 the product. Using a lightly damp cloth, clean  
 only the outside of the sphere. Only put the  
 glass sphere back on the product once it is  
 fully dry.