



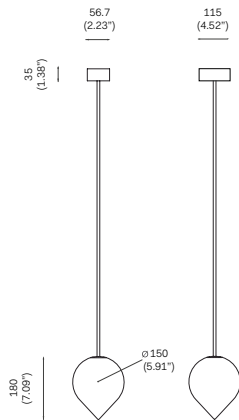
**BOB  
PENDANT ROD, 2015**

Polished Brass  
Mouth blown opaline glass  
Pendant rod length to order.



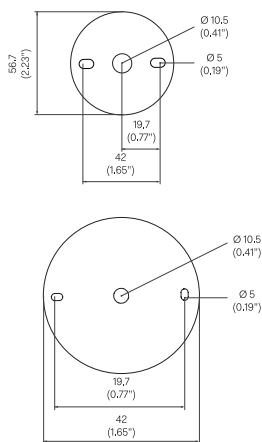
**OVERALL DIMENSIONS**

(Small ceiling rose only for 240V)

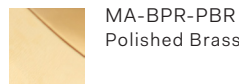


**BACKPLATE DIMENSIONS**

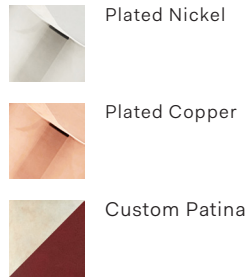
Mounting screws not included.  
5mm countersunk screw recommended.



**STANDARD MATERIAL/FINISH**



**CUSTOM FINISHES**



**BULB SPECIFICATIONS**

G9 3.5W LED bulb  
330 lm / 2700K

**PRODUCT SPECIFICATIONS**

Input voltage: 120V / 240V  
Maximum wattage: 40W  
120V / 240V dimmable LED triac  
Product weight: 2.5 kg  
IP20

Please supply required drop length of fixture, measured from the ceiling to bottom fitting at time of order.

Minimum total drop length 240V: 260mm.  
Maximum total drop length 240V: 2180mm.

Minimum total drop length 120V: 260mm.  
Maximum total drop length 120V: 2175mm.

Please allow 25mm tolerance of drop length.

**CLEANING INSTRUCTIONS**

Before cleaning, lighting fixtures must be turned off and unplugged from mains electricity. Whilst cleaning please take care and use the gloves provided.

Polished Brass: As the item is unlacquered it will naturally oxidise and darken. Upon touching the items without gloves, fingerprints are likely to occur and leave marks. Use a good quality brass cleaning liquid and follow the product instructions using the extra soft dust cloth. Do not apply pressure on persistent marks. Remove them using repeated gentle motions and by reapplying the brass cleaning liquid.

Plated Finish: Use a lightly damp soft dust cloth and gently go over marks until clean. Dry it afterwards with a soft dust cloth.

Patinated Finish: Use a dry soft dust cloth and gently go over marks until clean. The brass patina is achieved through an artisanal technique of applying pigments by hand during a hot patination process. Through this alchemic process, the brass is transformed whilst retaining the material's inherent qualities. It will mature and change overtime. The manner and speed in which it will change will depend on the environment, handling and the level and frequency of maintenance. Verdigris can also appear when the copper in the brass begins to oxidise.

Opaline Glass: Remove the opaline glass from the product. Using a lightly damp cloth, clean only the outside of the sphere. Only put the glass sphere back on the product once it is fully dry.