

Luce Cilindrica S1

Designed by Ronan Bouroullec, 2025

110W - 5345lm - 2700K - CRI> 95

Modular suspension lamp emitting diffused light. Horizontal body in polished extruded aluminium with two LED strips for upward and downward emission. Integrated touch dimmer enables independent control of light outputs. Body encased in a sequence of borosilicate glass cylinders separated by traditional spacers. Can be installed in multiple parallel rows.

Are you a professional and your project needs consulting and support?

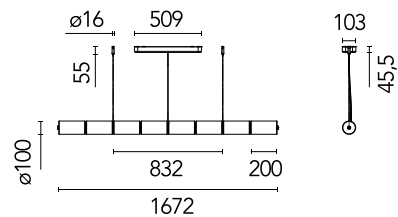
BOOK AN APPOINTMENT

Main specifications

EAN	8059607076781
Mounting	Suspension
Environments	Indoor dry location
Light source type	LED
Light sources included	Yes
LED type	LED Module
Power (W)	110
Lumen Output (lm)	5345

Physical

Colour	Glass
Length (mm)	1656
Cord length (mm)	2700
Canopy length/diameter (mm)	900
Canopy width (mm)	61
Canopy height (mm)	78
Net weight (kg)	12.5
Package volume (m3)	0.17
IP internal	20



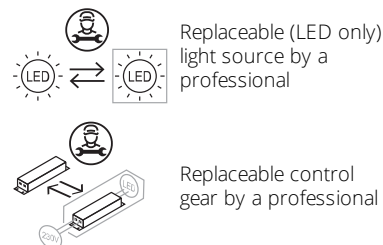
Download

Mounting instructions

PDF

Ecodesign and Energy Labelling

This product contains a light source of energy efficiency class F



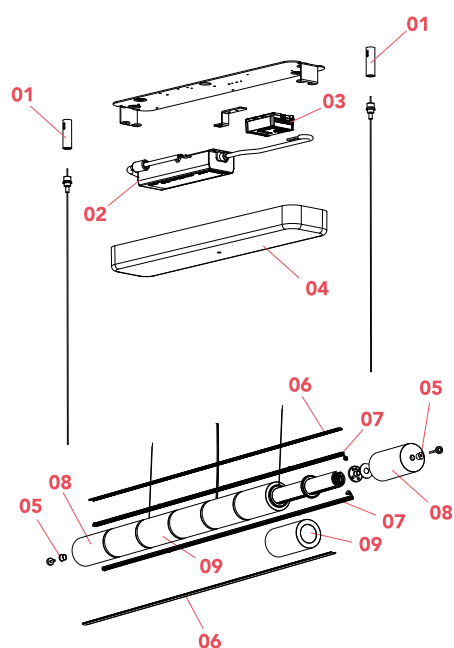
Photometric

Lighting type	Indirect, Direct
Light distribution	Symmetric
CCT (K)	2700
CRI>	95

Electrical

Insulation class	I
Frequency (Hz)	50/60
Main voltage (Vac)	100-240
LED current (mA)	500
Power supply	Integrated
Dimmable	Yes
Power supply type	Dimmer on board
Dimming interface	Dimmer Integrated

Spare Parts



Luce Cilindrica S2

Designed by Ronan Bouroullec, 2025

145W - 6682lm - 2700K - CRI> 95

Modular suspension lamp emitting diffused light. Horizontal body in polished extruded aluminium with two LED strips for upward and downward emission. Integrated touch dimmer enables independent control of light outputs. Body encased in a sequence of borosilicate glass cylinders separated by traditional spacers. Can be installed in multiple parallel rows.

Are you a professional and your project needs consulting and support?

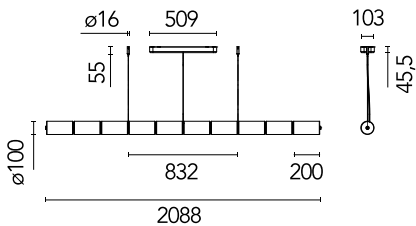
BOOK AN APPOINTMENT

Main specifications

EAN	8059607076798
Mounting	Suspension
Environments	Indoor dry location
Light source type	LED
Light sources included	Yes
LED type	LED Module
Power (W)	145
Lumen Output (lm)	6682

Physical

Colour	Glass
Length (mm)	2072
Cord length (mm)	2700
Canopy length/diameter (mm)	900
Canopy width (mm)	61
Canopy height (mm)	78
Net weight (kg)	14.6
Package volume (m3)	0.22
IP internal	20



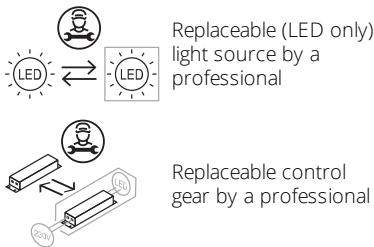
Download

Mounting instructions

PDF

Ecodesign and Energy Labelling

This product contains a light source of energy efficiency class F



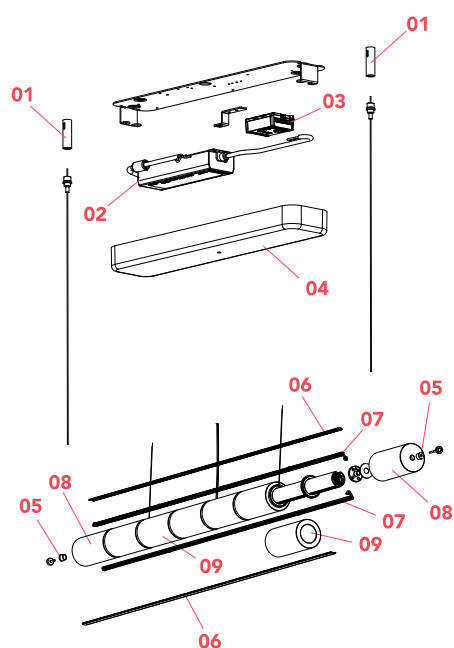
Photometric

Lighting type	Indirect, Direct
Light distribution	Symmetric
CCT (K)	2700
CRI>	95

Electrical

Insulation class	I
Frequency (Hz)	50/60
Main voltage (Vac)	100-240
LED current (mA)	600
Power supply	Integrated
Dimmable	Yes
Power supply type	Dimmer on board
Dimming interface	Dimmer Integrated

Spare Parts



Luce Cilindrica S3

Designed by Ronan Bouroullec, 2025

165W - 8018lm - 2700K - CRI> 95

Modular suspension lamp emitting diffused light. Horizontal body in polished extruded aluminium with two LED strips for upward and downward emission. Integrated touch dimmer enables independent control of light outputs. Body encased in a sequence of borosilicate glass cylinders separated by traditional spacers. Can be installed in multiple parallel rows.

Are you a professional and your project needs consulting and support?

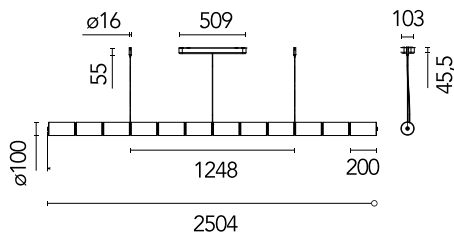
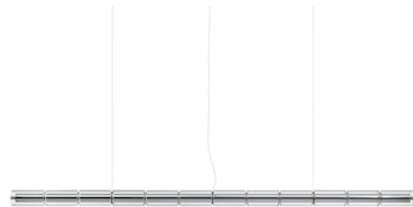
BOOK AN APPOINTMENT

Main specifications

EAN	8059607076804
Mounting	Suspension
Environments	Indoor dry location
Light source type	LED
Light sources included	Yes
LED type	LED Module
Power (W)	165
Lumen Output (lm)	8018

Physical

Colour	Glass
Length (mm)	2488
Cord length (mm)	2700
Canopy length/diameter (mm)	1316
Canopy width (mm)	61
Canopy height (mm)	78
Net weight (kg)	14.6
Package volume (m3)	0.26
IP internal	20



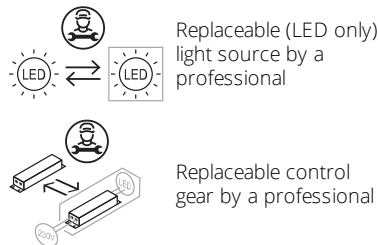
Download

Mounting instructions

PDF

Ecodesign and Energy Labelling

This product contains a light source of energy efficiency class F



Photometric

Lighting type	Indirect, Direct
Light distribution	Symmetric
CCT (K)	2700
CRI>	95

Electrical

Insulation class	I
Frequency (Hz)	50/60
Main voltage (Vac)	100-240
LED current (mA)	700
Power supply	Integrated
Dimmable	Yes
Power supply type	Dimmer on board
Dimming interface	Dimmer Integrated

Spare Parts

