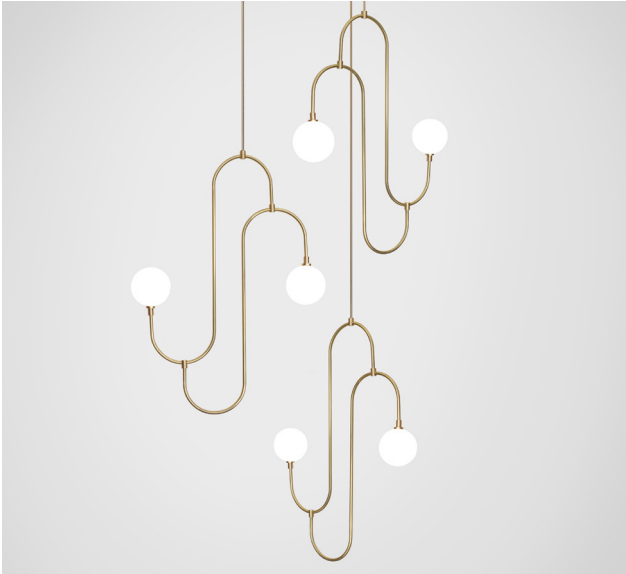


MARC WOOD



Inspired by the repeated patterns and sculptural form of 1930s jewellery design. The pendant incorporates hand bent brass arms that hold pearl white crystal glass, creating a decorative, functional lighting feature.

Jack and Jill cluster - 3 piece

Dimensions cm

W 88cm x H 115cm x D 88cm

Dimensions inch

W 34.6in x H 61in x D 34.6in

Material

Glass + Metal

Finishes - glass

Pearl white

Weight

6 kg - (13.2 lbs)

Finishes - metal

Brushed brass, Brushed nickel

Blackened steel

Suspension

Fixed metal arm suspension

Length cut bespoke to requirement

Canopy

White finish

Bespoke colours available on request

38cm (15in) x 2.5cm (1in)

Plate can be inset or surface mounted

240V Illumination

G12 LED bulb

Lumens: 260lm

Colour Temperature: 2700K

Dimmable: LED dimmer required

120V illumination

G12 LED bulb

Lumens: 260lm

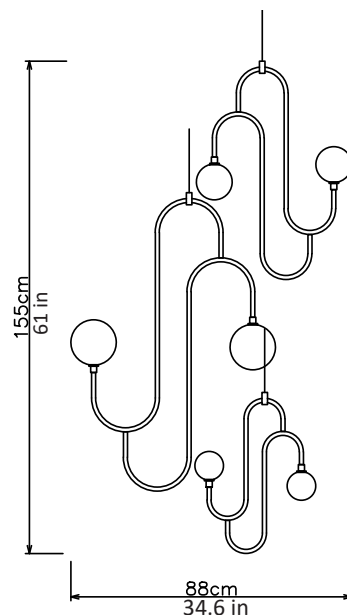
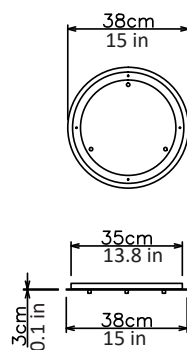
Colour Temperature: 2700K

Dimmable: LED dimmer required

Driver

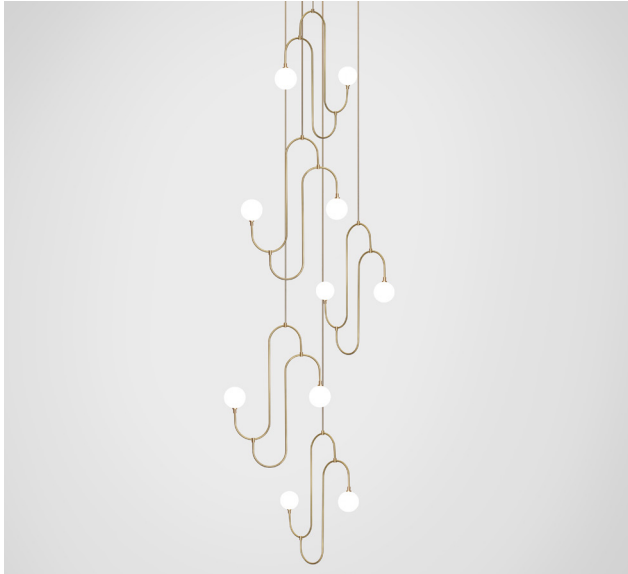
None required

Ceiling Plate



Chandelier

MARC WOOD



Inspired by the repeated patterns and sculptural form of 1930s jewellery design. The pendant incorporates hand bent brass arms that hold pearl white crystal glass, creating a decorative, functional lighting feature.

Jack and Jill cluster - 5 piece

Dimensions cm

W 100cm x H 260cm x D 100cm

Dimensions inch

W 39.3in x H 102.3in x D 39.3in

Material

Glass + Metal

Finishes - glass

Pearl white

Weight

10 kg - (22 lbs)

Finishes - metal

Brushed brass, Brushed nickel

Blackened steel

Suspension

Fixed metal arm suspension

Length cut bespoke to requirement

Canopy

White finish

Bespoke colours available on request

48cm (18.9in) x 2cm (0.8in)

Plate can be inset or surface mounted

240V Illumination

G12 LED bulb

Lumens: 260lm

Colour Temperature: 2700K

Dimmable: LED dimmer required

120V illumination

G12 LED bulb

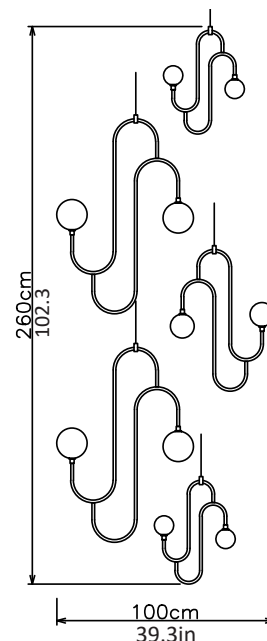
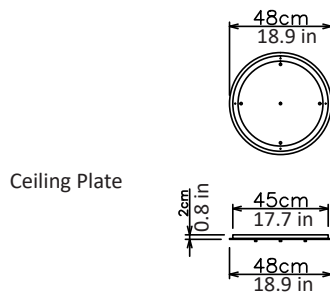
Lumens: 260lm

Colour Temperature: 2700K

Dimmable: LED dimmer required

Driver

None required



Chandelier