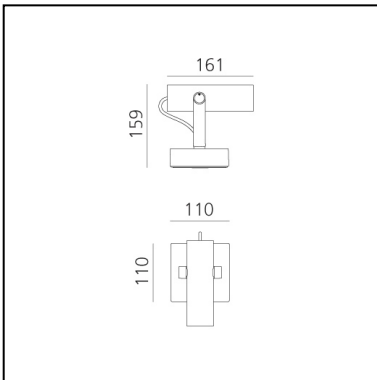


Coherence 2°

Carlotta de Bevilacqua



LUMINAIRE

- Watt: **9,5W**
- Delivered lumen output: **24lm, 18000cd**
- CCT: **3000K**
- CRI: **95**

Notes

Patent of invention

DESCRIPTION

Projector for indoor or outdoor use with innovative patented optical system that controls a 2°, 5° and 10° opening light beam with precise cut-off net that guarantees excellent performance.

FEATURES

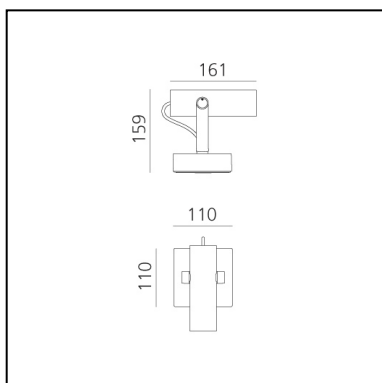
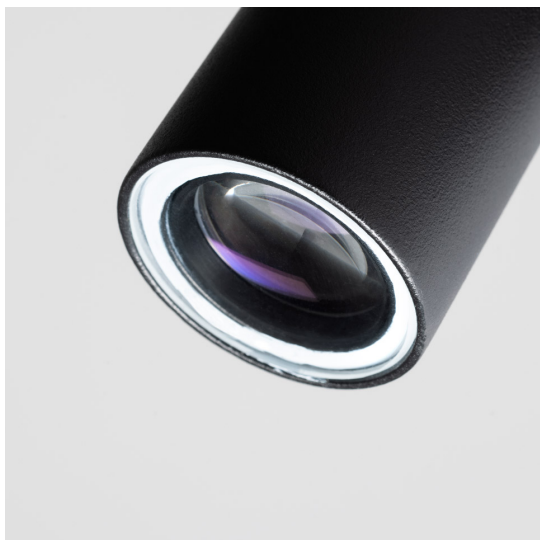
- Product Code: **T060030**
- Colour: **Black**
- Installation: **CeilingWallProjector**
- Series: **Architectural Indoor, Architectural Outdoor**
- design by: **Carlotta de Bevilacqua**

DIMENSIONS

- Length: **161 mm**
- Height: **159 mm**
- Base Length: **110 mm**
- Base Width: **110 mm**

Coherence 5°

Carlotta de Bevilacqua



LUMINAIRE

- Watt: **9,5W**
- Delivered lumen output: **90lm, 14500cd**
- CCT: **3000K**
- CRI: **95**

Notes

Patent of invention

DESCRIPTION

Projector for indoor or outdoor use with innovative patented optical system that controls a 2°, 5° and 10° opening light beam with precise cut-off net that guarantees excellent performance.

FEATURES

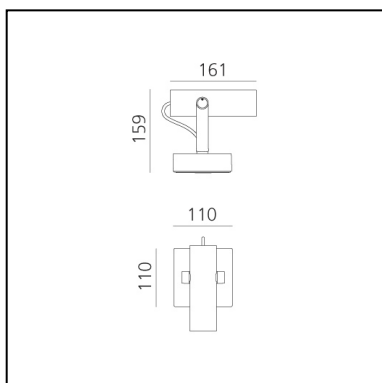
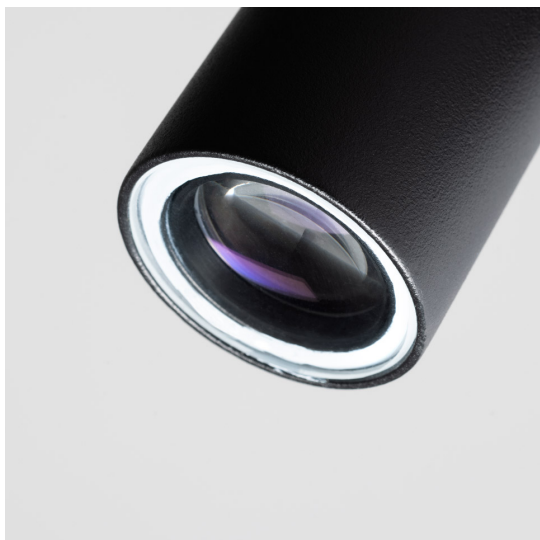
- Product Code: **T060130**
- Colour: **Black**
- Installation: **CeilingWallProjector**
- Series: **Architectural Indoor, Architectural Outdoor**
- design by: **Carlotta de Bevilacqua**

DIMENSIONS

- Length: **161 mm**
- Height: **159 mm**
- Base Length: **110 mm**
- Base Width: **110 mm**

Coherence 10°

Carlotta de Bevilacqua



LUMINAIRE

- Watt: **9,5W**
- Delivered lumen output: **160lm, 7000cd**
- CCT: **3000K**
- CRI: **95**

Notes

Patent of invention

DESCRIPTION

Projector for indoor or outdoor use with innovative patented optical system that controls a 2°, 5° and 10° opening light beam with precise cut-off net that guarantees excellent performance.

FEATURES

- Product Code: **T060230**
- Colour: **Black**
- Installation: **CeilingWallProjector**
- Series: **Architectural Indoor, Architectural Outdoor**
- design by: **Carlotta de Bevilacqua**

DIMENSIONS

- Length: **161 mm**
- Height: **159 mm**
- Base Length: **110 mm**
- Base Width: **110 mm**