

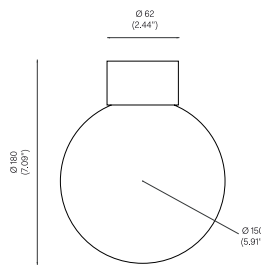


BRASS ARCHITECTURAL COLLECTION  
SCONCE 150, CEILING & WALL MOUNTED, 2017

Polished Brass  
Mouth blown opaline glass

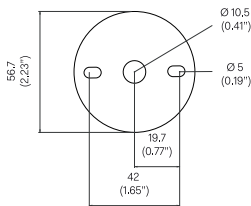


OVERALL DIMENSIONS

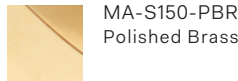


BACKPLATE DIMENSIONS

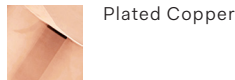
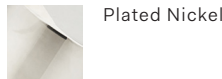
Mounting screws not included.  
5mm countersunk screw recommended.



STANDARD MATERIAL/FINISH



CUSTOM FINISHES



CLEANING INSTRUCTIONS

Before cleaning, lighting fixtures must be turned off and unplugged from mains electricity. Whilst cleaning please take care and use the gloves provided.

Polished Brass: As the item is unlacquered it will naturally oxidise and darken. Upon touching the items without gloves, fingerprints are likely to occur and leave marks. Use a good quality brass cleaning liquid and follow the product instructions using the extra soft dust cloth. Do not apply pressure on persistent marks. Remove them using repeated gentle motions and by reapplying the brass cleaning liquid.

Plated Finish: Use a lightly damp soft dust cloth and gently go over marks until clean. Dry it afterwards with a soft dust cloth.

Patinated Finish: Use a dry soft dust cloth and gently go over marks until clean. The brass patina is achieved through an artisanal technique of applying pigments by hand during a hot patination process. Through this alchemic process, the brass is transformed whilst retaining the material's inherent qualities. It will mature and change overtime. The manner and speed in which it will change will depend on the environment, handling and the level and frequency of maintenance. Verdigris can also appear when the copper in the brass begins to oxidise.

Opaline Glass: Remove the opaline glass from the product. Using a lightly damp cloth, clean only the outside of the sphere. Only put the glass sphere back on the product once it is fully dry.

BULB SPECIFICATIONS

G9 3.5W LED bulb  
330lm / 2700k

PRODUCT SPECIFICATIONS

Input voltage: 120V / 240V  
120V / 240V dimmable LED triac  
Product weight: 2kg  
IP20

120V version supplied with paintable junction box cover.

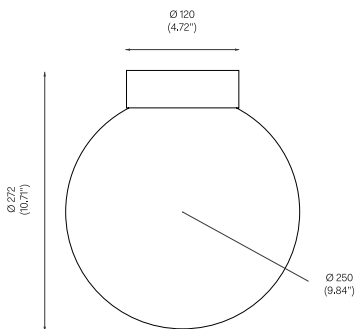


BRASS ARCHITECTURAL COLLECTION  
SCONCE 250, CEILING & WALL MOUNTED, 2017

Polished Brass  
Mouth blown opaline glass

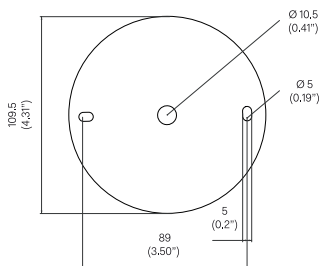


OVERALL DIMENSIONS

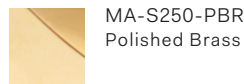


BACKPLATE DIMENSIONS

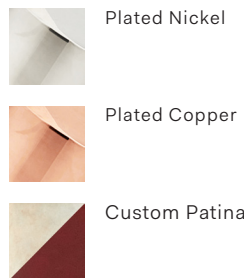
Mounting screws not included.  
5mm countersunk screw recommended.



STANDARD MATERIAL/FINISH



CUSTOM FINISHES



CLEANING INSTRUCTIONS

Before cleaning, lighting fixtures must be turned off and unplugged from mains electricity. Whilst cleaning please take care and use the gloves provided.

Polished Brass: As the item is unlacquered it will naturally oxidise and darken. Upon touching the items without gloves, fingerprints are likely to occur and leave marks. Use a good quality brass cleaning liquid and follow the product instructions using the extra soft dust cloth. Do not apply pressure on persistent marks. Remove them using repeated gentle motions and by reapplying the brass cleaning liquid.

Plated Finish: Use a lightly damp soft dust cloth and gently go over marks until clean. Dry it afterwards with a soft dust cloth.

Patinated Finish: Use a dry soft dust cloth and gently go over marks until clean. The brass patina is achieved through an artisanal technique of applying pigments by hand during a hot patination process. Through this alchemic process, the brass is transformed whilst retaining the material's inherent qualities. It will mature and change overtime. The manner and speed in which it will change will depend on the environment, handling and the level and frequency of maintenance. Verdigris can also appear when the copper in the brass begins to oxidise.

Opaline Glass: Remove the opaline glass from the product. Using a lightly damp cloth, clean only the outside of the sphere. Only put the glass sphere back on the product once it is fully dry.

BULB SPECIFICATIONS

E26 / E27 13W LED bulb  
1400lm / 2700k

PRODUCT SPECIFICATIONS

Input voltage: 120V / 240V  
Maximum wattage: 75W  
120V / 240V dimmable LED triac  
Product weight: 3kg  
IP20