

±115-240  
(4.5-9.5')

±300-500  
(12-20')

32  
(1.3')

adjustable  
up to 3000  
(10')  
standard

adjustable  
up to 30500  
(100')  
custom



203 (8")

±185 (7.3")

approx 6.8kg (15lb)

PENDANTS: five

MOUNTING: brushed nickel canopy 203mm (8") in diameter x 32mm (1.3") deep

LAMPING: 1.5w LED or 10w xenon

COAX: adjustable. 3000mm (10') standard / up to 30500mm (100') maximum

MATERIALS: pulled glass, braided metal coaxial cable, electrical components, brushed nickel canopy

WEIGHT: approximately 6.8kg (15lb)

POWER SUPPLIES: integral

#### DESCRIPTION

87.5 is a random configuration of five 87 pendants hung from a round canopy. The pendants are designed to hang in a random configuration, the result is an ambient installation or field of light. The pendant drop lengths on this light fixture are adjustable up to the specified maximum.

A matrix of hot glass is stretched and folded back onto itself numerous times as it cools. Air is trapped between the folds and stretched along the grain of the loop, creating microfilaments that give the piece a pearlescent optical quality. A LED light source is introduced at one end of the loop casting light through the microfilaments and registering a gentle gradient.

#### NOTES

- + Purchase replacement lamps online at [www.bocci.com/shop/bulbs](http://www.bocci.com/shop/bulbs)
- + Unless otherwise noted when ordering, all chandeliers will be outfitted to be xenon compatible.
- + As an alternative to built-in power supplies, Bocci recommends mounting power supplies remotely in an easily accessible and hidden location for ease of long-term maintenance.

Worldwide patents pending  
EU Patent # 03611144 - 0005-0009

Made in Vancouver, Canada

Vancouver  
[sales@bocci.com](mailto:sales@bocci.com)  
[www.bocci.com](http://www.bocci.com)

Berlin  
[europe@bocci.com](mailto:europe@bocci.com)  
[www.bocci.com](http://www.bocci.com)

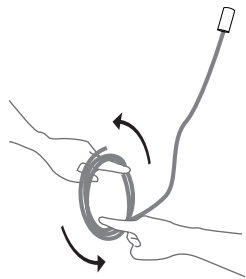


# 87.5

Design by Omer Arbel  
PRODUCT SPECIFICATION

© 2021, Bocci Design and Manufacturing Inc. All rights reserved. Any inquiries should be directed to: [info@bocci.com](mailto:info@bocci.com)

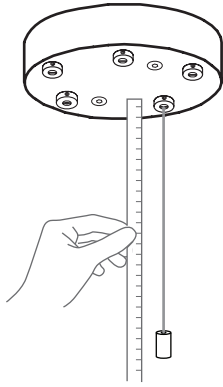
# BOCCI



1

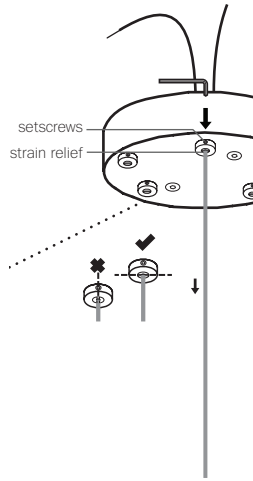
Very carefully uncoil the braided coaxial cable in a spool like manner. Insert your index fingers into opposite sides of the roll then rotate your fingers around each other to unroll the coaxial cable.

Use patience: allow the cable to uncoil completely to avoid kinks.



2

Determine the overall drop for the pendant fixture.



3

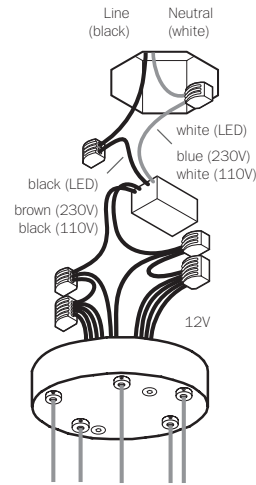
Thread the coaxial cables through the canopy, use a 2mm Allen key to loosen the setscrew in the canopy and gently feed the cable through until you have reached your desired drop length.

Use Allen key to tighten the setscrew to hold the strain relief and secure the coaxial cable at its new length. Perform a gentle tug test to ensure it is secure.

DO NOT OVERTIGHTEN.

Note: The strain relief is a black plastic collar around the coaxial cable. There is a single slot opening on the side of the strain relief component. It is essential that this opening is oriented at 90 degrees to set screw chamber. There can be no contact between the set screw and the cable.

RISK OF ELECTRIC SHORT!



4

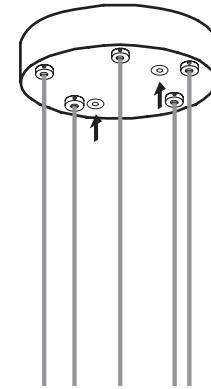
Xenon (110V) or LED: connect the black wire to black and white wire to white wire.

Xenon (230V): connect black wire to brown wire and white wire to blue wire.

Connect the coaxial cable to the open slots in the terminal block on the 12V side of the power supplies.

Ensure that the braided outer wires are all connected to one 12V output wire and all inner insulated wires are connected to the other or a short will occur.

Once all coaxial connections are made, lift the fixture into position and connect the line voltage to the open slot in the appropriate terminal block.

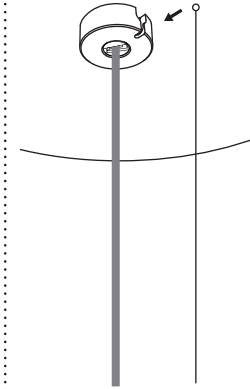


5

The client is responsible to ensure fasteners are attached to a robust structural substrate.

Tuck the power supply and wiring into the canopy. Line up the fastener holes or connect directly to structural ceiling surface using the fasteners provided.

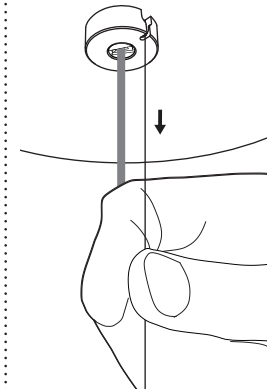
Turn power to fixture on.



6

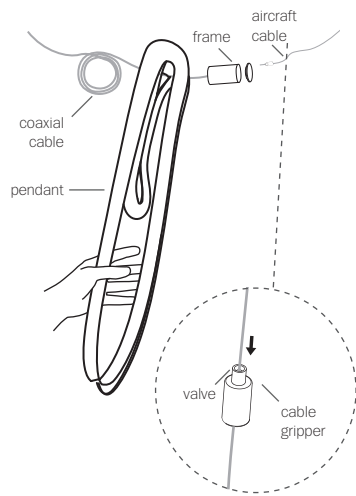
Check that each lamp is working properly as you go along.

On the canopy, there is a slot that will receive the ball on the end of aircraft cable. Slide ball end aircraft cable into the slot.



7

Pull it gently to make sure the aircraft cable is seated properly.

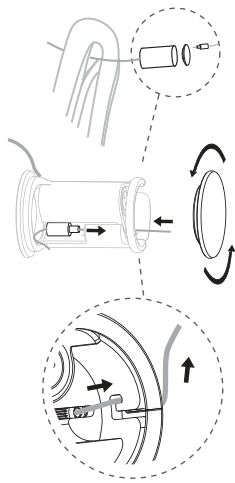


8

Push the valve on the cable gripper and adjust the position of the cable gripper so that the aircraft cable is roughly the same length as the coaxial cable.

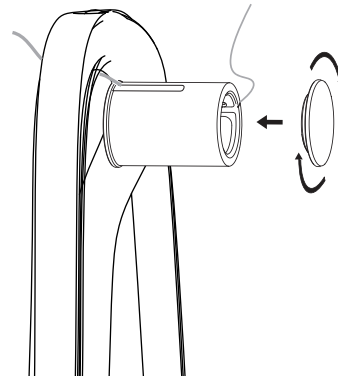
Apply a load to the cable to ensure it is locked.

Thread the frame assembly through the top hole of the 87 pendant.



9

Unscrew frame cap opposite to the coaxial cable. Hook the cable gripper into the pocket inside the frame and guide the cable through the u-shaped hook in the frame and the silicone tube.



10

Screw frame cap back onto the frame assembly.



11

Rest pendant onto frame assembly.

If needed, repeat step 8 to adjust the position of frame.

Note: Frame assembly should hang level. The swag cable and the coaxial cable should be approximately the same length.



12

Clean fingerprints from surfaces.

For additional assistance, please contact Bocci:

Vancouver  
sales@bocci.com  
www.bocci.com

Berlin  
europe@bocci.com  
www.bocci.com

Worldwide patents pending  
EU Patent # 03611144 - 0005-0009

Made in Vancouver, Canada



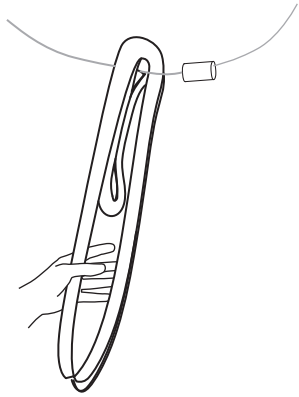
LOW VOLTAGE LUMINAIRE  
E476186

87.5

Design by Omer Arbel  
PRODUCT INSTALLATION INSTRUCTIONS

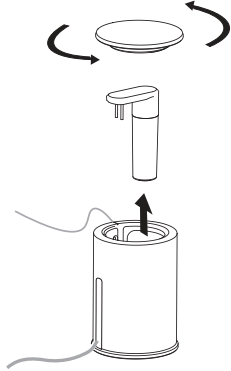
© 2021, Bocci Design and Manufacturing Inc. All rights reserved. Any inquiries should be directed to: info@bocci.com

**BOCCI**



1

Lift glass off of lamp holder assembly and hold securely.



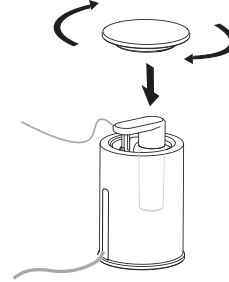
2

Unscrew cap at the aircraft cable end of the lamp holder assembly. Push coaxial cable through the slot in the silicone sheath, and remove lamp and lamp adapter.



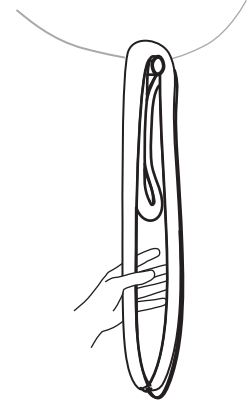
3

Remove lamp from lamp adapter and replace with new bulb.



4

Screw cap back onto the lamp holder assembly.



5

Gently rest pendant back onto lamp holder assembly.

Clean fingerprints from glass surfaces.

Turn power to fixture on.

For additional assistance,  
please contact Bocci:

Vancouver  
sales@bocci.com  
www.bocci.com

Berlin  
europe@bocci.com  
www.bocci.com

Worldwide patents pending  
EU Patent # 03611144 - 0005-0009

Made in Vancouver, Canada



LOW VOLTAGE LUMINAIRE  
E476186

87.5

Design by Omer Arbel  
LAMP REPLACEMENT INSTRUCTIONS

© 2021, Bocci Design and Manufacturing Inc. All rights reserved. Any inquiries should be directed to: info@bocci.com

**BOCCI**