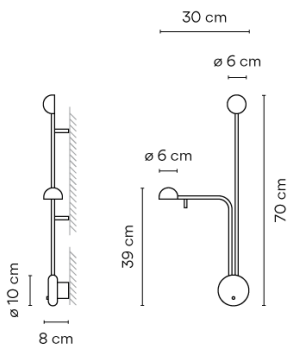


## 1685

Design By Ichiro Iwasaki

Wall lamp. Design by Ichiro Iwasaki. Wall light which provides passageways with ambient illumination via indirect light. Available in white, black, cream and green matt finishes.

### Model Sheet



- Finish**
- 04 Black  
NCS 9000N
  - 58 Cream  
NCS S 2005-Y20R
  - 23 Warm White  
test ral

**LED temperature color** 2700 K

**Dimming** On/Off

**Installation type** Surface Canopy

**Materials** Head: Aluminium  
Base: Zinc Alloy  
Diffuser: PC- Polycarbonate  
Rods: Steel

**Light source** 2 x LED 4,48W 350mA



**LED** CRI>90 905.9 lm 100.66  
2700 K

**Driver** Constant Current 350 100~240  
V V 50~60 Hz HZ

**Remarks** Switch on the wall plate



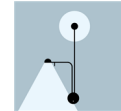
**Application** Wall Lamps

**Packaging** 1 Box  
0.792 m x 0.445 m x 0.177 m  
Gross weight 2.64  
Net weight 1.2  
Vol. 0.0623

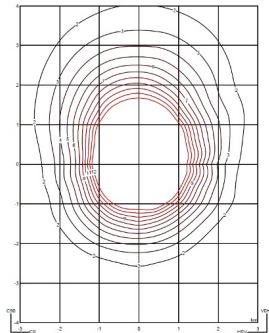
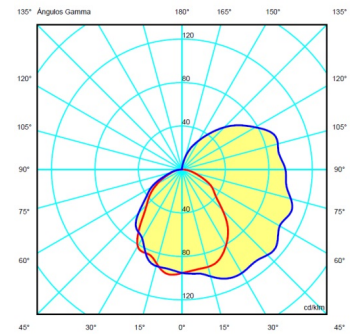
#### Lighting effect

##### Reading

High intensity, glare-free task lighting

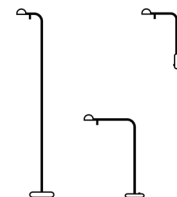


#### Photometric Data



**Efficiency** 46.09%  
**Coordinate System** CG  
**Total Flux** 900.00  
**Maximum Value** 112.33

#### Other Applications



All of our products come with a five-year warranty. Check our legal terms at [www.vibia.com/warranty](http://www.vibia.com/warranty)

**Vibia Lighting, S.L.U.**

**Office / Oficina**  
Progrés 4-6. 08850 Gavà. Barcelona, Spain.

**International** T +34 934 796 971  
**Spain / Portugal** T +34 934 796 970

[customer.service@vibia.com](mailto:customer.service@vibia.com)  
[vibia.com](http://vibia.com)