

Pin

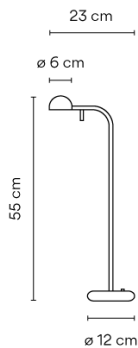
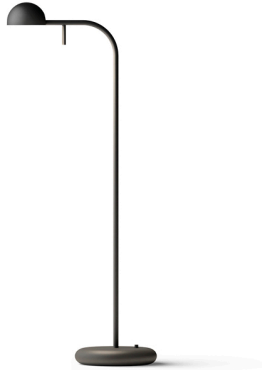
1650

Design By Ichiro Iwasaki

Table lamp. Design by Ichiro Iwasaki. This reading lamp is characterized by having a short arm and an adjustable head. Available in white, black, cream and green matt finishes.

VIBIA

Model Sheet



Finish

- 04 Black
NCS 9000N
- 23 Warm White
test ral
- 58 Cream
NCS S 2005-Y20R

LED temperature color 2700 K

Dimming On/Off

Installation type Plug-in

Materials Head: Aluminium
Base: Zinc Alloy
Diffuser: PC- Polycarbonate
Rods: Steel

Light source 1 x LED 4,48W 350mA



LED CRI>90 452.95 lm 100.66
2700 K

Driver Constant Current 350 100~240
V V 50-60 Hz HZ

Remarks Switch on the base



Application Floor and Table Lamps

Packaging 1 Box
0.713 m x 0.212 m x 0.174 m
Gross weight 2.94
Net weight 2
Vol. 0.0263

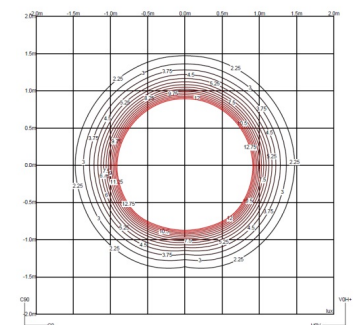
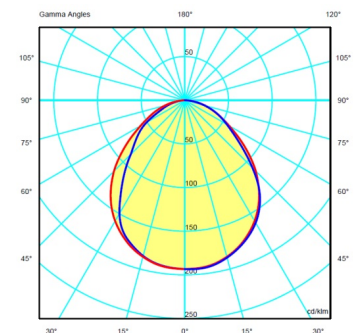
Lighting effect

Reading

High intensity, glare-free task lighting

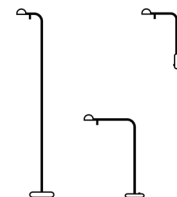


Photometric Data



Efficiency 46.31%
Coordinate System CG
Total Flux 449.94
Maximum Value 193.70

Other Applications



All of our products come with a five-year warranty. Check our legal terms at www.vibia.com/warranty

Vibia Lighting, S.L.U.

Office / Oficina
Progrés 4-6. 08850 Gavà. Barcelona, Spain.

International T +34 934 796 971
Spain / Portugal T +34 934 796 970

customer.service@vibia.com
vibia.com